



PRODUCT CODE:

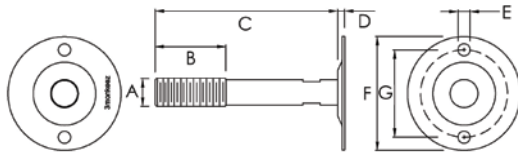
FH-10

FH-11

FH-12

FH-13

304 Grade Stainless Steel Adjustable Disc Foot



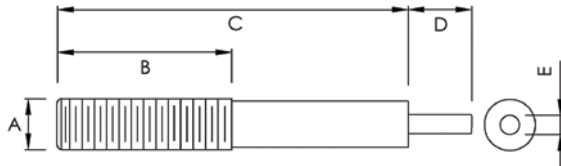
PRODUCT CODE	A	B	C	D	E	F	G	# OF HOLES
FH-10	16	41	105	4	7	65	50	2
FH-11	16	41	105	4	5	50	39	2
FH-12	16	41	70	4	5	50	39	2
FH-13	16	41	70	4	7	65	50	2



PRODUCT CODE:

FH-14

304 Grade Stainless Steel Adjustable Pin Foot



PRODUCT CODE	A	B	C	D	E
FH-14	16	55	110	20	6

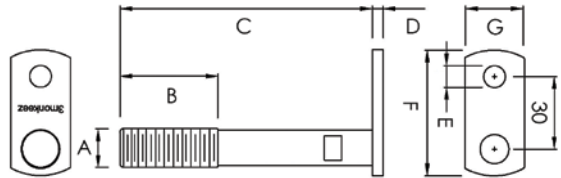


PRODUCT CODE:

FH-15

FH-16

304 Grade Stainless Steel Adjustable Lug Foot



PRODUCT CODE	A	B	C	D	E	F	G	# OF HOLES
FH-15	16	41	70	4.5	9	52	25	1
FH-16	16	41	105	4.5	9	52	25	1

All measurements in mm.



STAINLESS STEEL EVOLUTIONS  
Innovate · Create · Deliver