

Congratulations! You have just purchased one of the premium products from 3monkeez range which has been manufactured to WaterMark Technical Specification WMTS-101

SCOPE OF APPLICATION

R-PR-SJ150 Compact In-Bench Glass and Jug Rinser

IMPORTANT INFORMATION



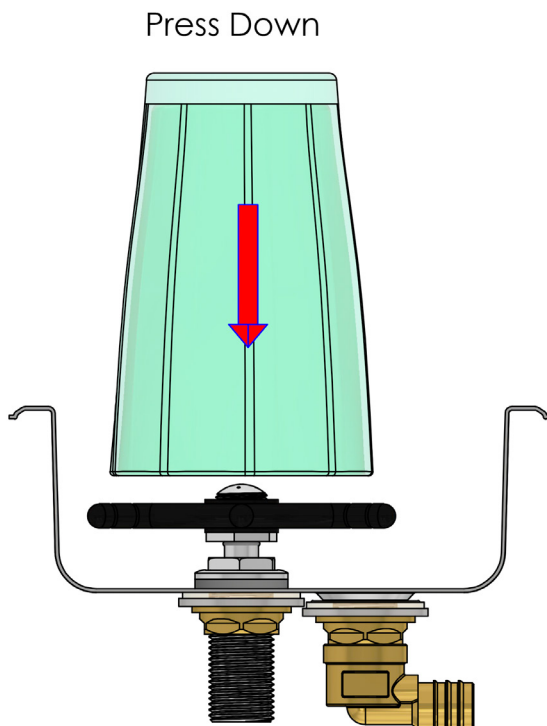
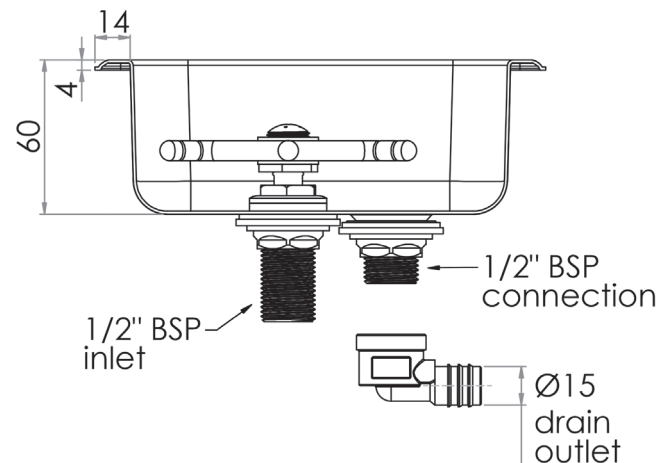
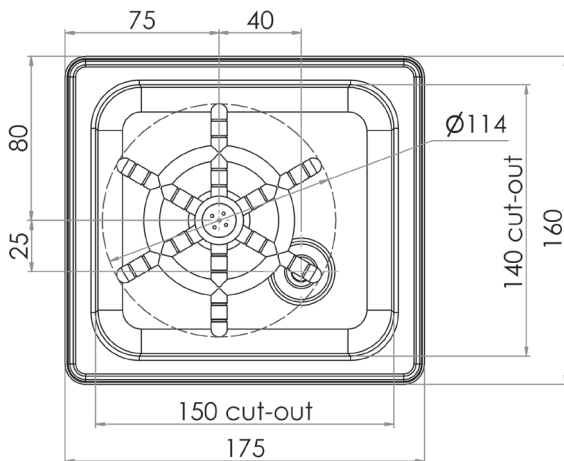
Note: Please follow the below procedures. If the below procedures are not followed it may impact the life of some components and void warranties.

Installation subject to the requirements of the National Construction Code of Australia Volume Three-Plumbing Code of Australia and Australian Standard AS/NZS 3500.

This product is designed for cold water only. Max supply temperature 35C. Min 5C.

Supply cold water pressure 100kpa - 500kpa. If pressure exceeds 500 kpa a pressure reduction valve must be installed.

INSTALLATION INSTRUCTIONS



1. Check dimensions of the sink cut-out on site before cutting the bench.
2. Mark position and outline of the cut-out and cut.
Important! If installing in a laminated timber bench top, all exposed edges must be sealed and waterproof before installation.
3. Connect 25mm tube from drain to elbow and secure with jubilee clip or other suitable fitting. (Not supplied)
4. Alternately, unscrew drain elbow and connect to drain using 1/2" BSP fittings. (Not supplied)
5. Make sure wall stop is turned off. Disconnect hose to existing tap and install a "T" pipe fitting at the wall stop if necessary.
6. Clear water lines before connecting the rinser unit.
7. Connect a Watermark approved, 1/2" BSP flexible hose from the wall stop to the inlet of the spray assembly and tighten.
8. Turn on water supply and cautiously open wall stop to test for leaks. Re-tighten ends of flexible hose if necessary. Test the operation of the rinser.
9. Fix the sink in place with a suitable silicone sealant or adhesive and allow to cure before use.

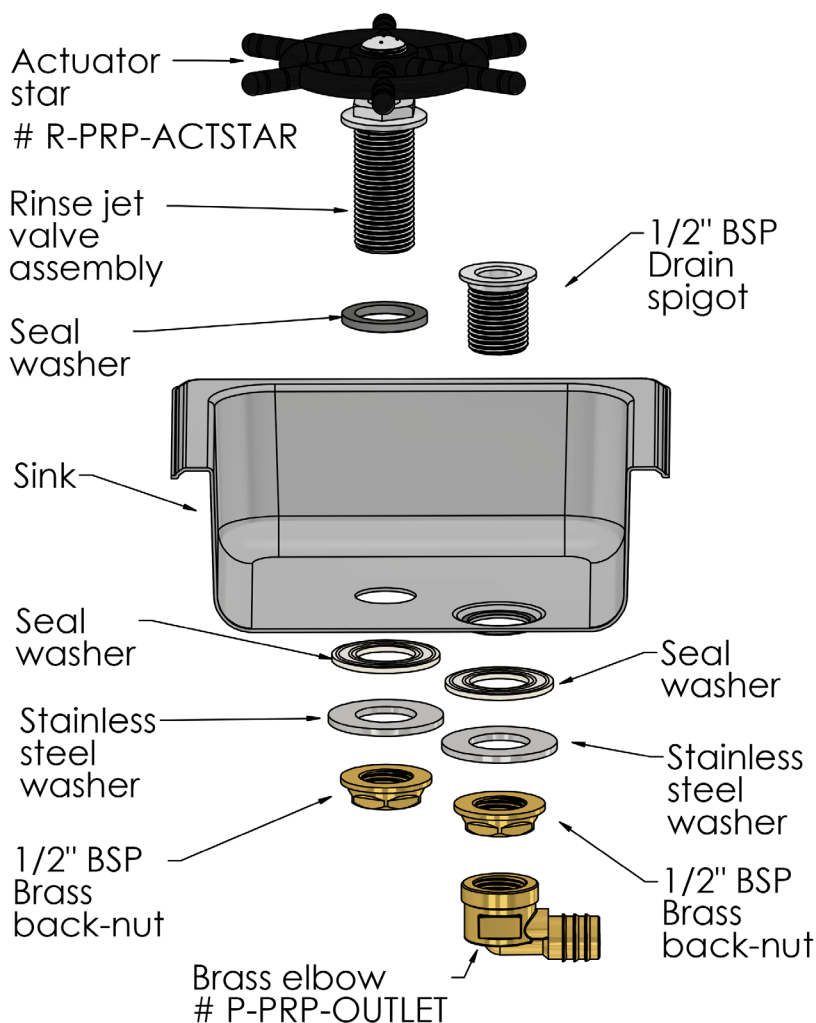
Note: Rinser valves may be used to pre-cool glasses by connecting to a chilled water supply.

PACKING LIST

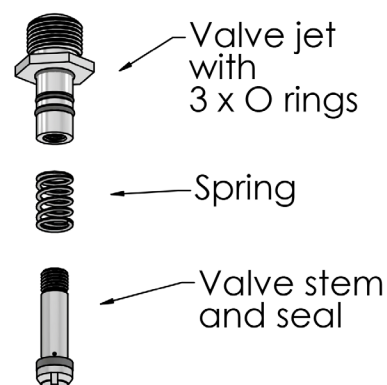
- R-PR-SJ150 rinser assembly and sink

- Installation instructions

R-PR-SJ150 PARTS



Repair Kit # R-PRP-GRVKIT



MAINTENANCE INSTRUCTIONS

All rinser products are subject to normal wear and may require servicing according to the conditions of use and the nature of the water supply.

3monkeez can supply a repair kit # R-PRP-GRVKIT with all parts required to fix leaking or dribbling rinse valves. To install the kit:

1. Turn off the water supply and disconnect the flexible hose from the inlet of the Rinse jet valve assembly.
2. Using an appropriate spanner, unscrew the 1/2" BSP back-nut.
3. Remove the stainless steel washer and the seal washer. The rinse jet valve and actuator star should now be free to remove from the sink.
4. Hold the hex part of the valve jet with an appropriate spanner and unscrew the actuator star.
5. Locate the slotted end of the valve stem inside the inlet of the valve assembly. You will need a large flat-bladed screwdriver to unscrew the valve stem and seal.
6. Remove the valve jet, spring and valve stem. Check bore of the body of the valve for dirt and debris, Clean as necessary. Insert the spring and valve jet into the top of the body and the valve stem and seal into the inlet side. Compress the spring and valve jet. Screw the valve stem and seal into the valve jet. Use a spanner on the hex part of the valve jet and tighten the valve stem with a flat-bladed screwdriver.
7. Re-assemble the actuator star and housing.
8. Re-fit the rinser assembly into the sink with the seal washer, stainless steel washer and clamp nut. Tighten as necessary.
9. Re-connect the water supply. Test for leaks and operation of the valve. Re-tighten connections if necessary.