

Plumbing & Sanitary



Stainless Steel Pedestal Slop Hopper - S Trap - Made to Order

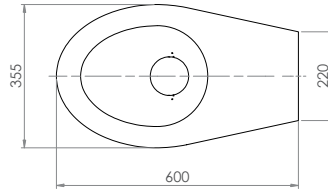


M-SH-PS

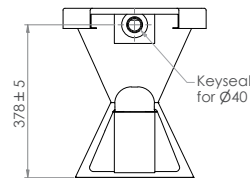
- Compatible with 3monkee® Dual Flush Cistern - AB-CIS-DF-2 or 3monkee® Pull Chain Cistern - AB-CIS-PC
- Easy to retrofit
- Simple installation
- Radius edges
- Satin finish
- 2mm 304 grade stainless steel
- In stock and available for immediate delivery



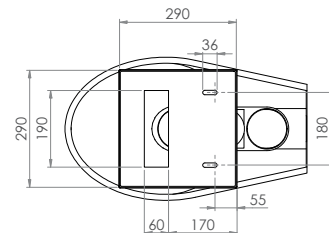
Top



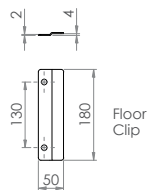
Rear



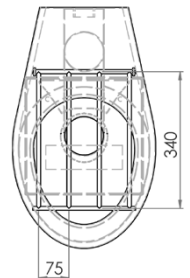
Bottom



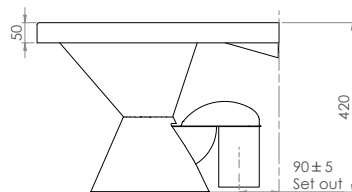
Floor Clip



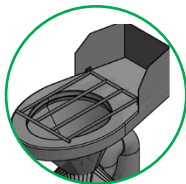
Slophopper



Cross Section



- Also available with a 150mm high shroud and top inlet if required



If used with 3monkee® cistern and stainless steel flushpipe, set out range is 240mm – 470mm from wall to centre of outlet.

Refer to warranty for exclusions.

3monkee.com.au