

# Storage & Hardware

## Stainless Steel Adjustable Leg & Mounting Plate



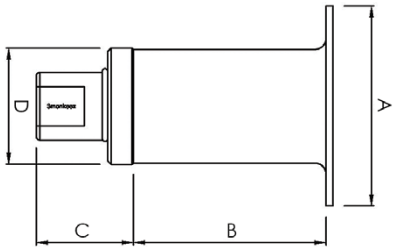
- FH-46-S/S**  
(O/A Height 124mm - 153mm)
- FH-46-Z/P**  
(O/A Height 124mm - 153mm)
- FH-47-S/S**  
(O/A Height 150mm - 177mm)
- FH-47-Z/P**  
(O/A Height 150mm - 177mm)
- FH-48-S/S**  
(O/A Height 198mm - 227mm)
- FH-48-Z/P**  
(O/A Height 198mm - 227mm)
- FH-49-S/S**  
(O/A Height 249mm - 277mm)
- FH-49-Z/P**  
(O/A Height 249mm - 277mm)



- FH-50** (Stainless Steel)
- FH-51** (Zinc Plated)

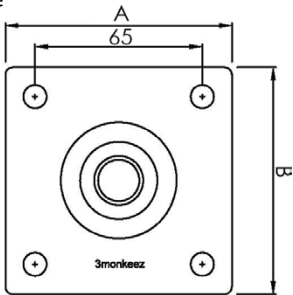


Adjustable Leg - Round Tube



PRODUCT CODE	A	B	C	D	MOUNT-ING PLATE
FH-46-S/S	88	85	36	50	FH-50
FH-46-Z/P	88	85	36	50	FH-51
FH-47-S/S	88	110	36	50	FH-50
FH-47-Z/P	88	110	36	50	FH-51
FH-48-S/S	88	160	36	50	FH-50
FH-48-Z/P	88	160	36	50	FH-51
FH-49-S/S	88	210	36	50	FH-50
FH-49-Z/P	88	210	36	50	FH-51

Mounting Plate



PRODUCT CODE	A	B	THICK-NESS	HOLE	# OF HOLES
FH-50	88	88	3	9	4
FH-51	88	88	3	9	4

S/S = Stainless Steel    Z/P = Zinc Plated  
All measurements in mm.