

Congratulations! You have just purchased one of the premium products from 3monkeez commercial tapware range which has been manufactured to Australian Standard AS/NZS3718.

## SCOPE OF APPLICATION

**T-3MSS-CSSEW**  
Standard Cleaners Sink Spout Only

**T-3MCSKIT-E08**  
Exposed Wall Mount Tap Body, Cleaners Sink Spout and Spout Bracket

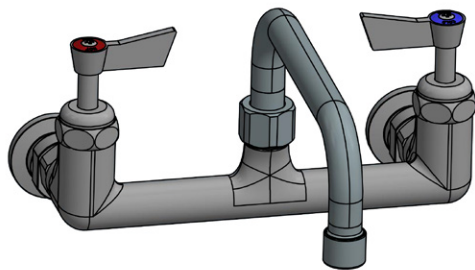
## IMPORTANT INFORMATION



Note: Please follow the below procedures. If the below procedures are not followed it may impact the life of some components and void warranties.

- Product must be installed by a qualified plumber in accordance with the Plumbing Code of Australia (PCA), AS/NZS3500 and the Manufacturer's instructions
- All pipework must be thoroughly flushed to remove any debris prior to installation as foreign materials may cause damage to internal parts and affect performance
- Aerator insert housing must be tightened to prevent removal by hand for all units
- If the unit is replacing an existing unit please ensure the water supply is turned off
- The tapware may come partially assembled. This is for packing purposes only.
- This products complies with the Lead Free requirements of the National Construction Code Volume Three

## INSTALLATION INSTRUCTIONS



### Step 1

Remove the exposed wall tap body from the packaging and check that all parts are included inside the box against the packing.

### Step 2

Apply thread tape/sealant/loxeal to the outlet threads.

**Important:** Care must be taken that the thread tape cannot become dislodged and block the flow regulating device, causing a reduction in water flow.

### Step 3

Unscrew the wall flanges from the rear of the exposed wall tap body, taking care that the rubbers stay in place.  
Fix the wall flanges to the water outlets.

### Step 4

Fit the exposed wall tap body to the wall flanges by screwing the loose nut of the wall flanges onto the exposed wall tap body, ensuring the rubbers are in place.  
Tighten to ensure no leaks, but do not over tighten.

### Step 5

To install the spout, screw the adaptor piece (T-3M2927-SR) into the tap body. Apply grease to the o-rings on the spout and attach the spout to the tap body. Take care when attaching the spout that the o-rings do not move.  
Line up the spout so that it is perpendicular to the wall. Tighten the stainless nut onto the tap body to lock spout in place.

\*Once installation is complete; turn the water supply on to test the functionality of the unit. Check for leaks.

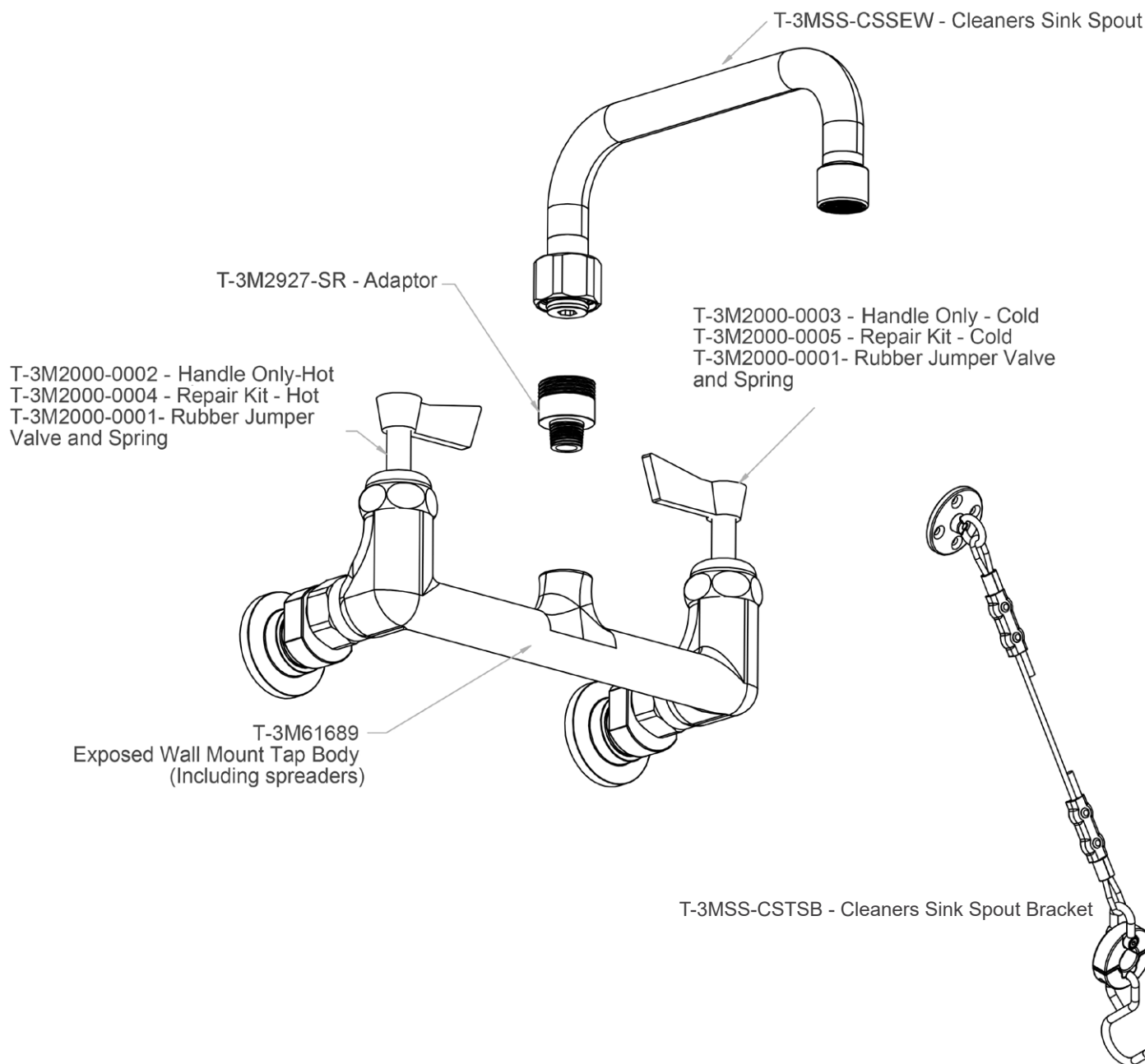
REFER TO SEPARATE INSTRUCTION SHEET FOR CLEANERS SINK SPOUT BRACKET INSTALLATION

## TECHNICAL INFORMATION

Inlet Connections	1/2" FI BSP Threads
Tap Outlet	Neoperl Aerator
Working Pressure Range	150kPa - 500kPa
Flow Rate	8LPM
Maximum Operating Temperature	80 Degrees Celcius
Finish	Satin Stainless Steel

**W**  
**Lead Free**  
AS 3718  
23145

**CARTON CONTENTS - 1x Exposed Wall Tap Body, 1x Spout Adaptor, 1x Standard Spout, 1x Spout Bracket, 1x Grease, 1x Warranty Certificate**



## STAINLESS STEEL MAINTENANCE AND CLEANING INSTRUCTIONS

Stainless steel products must be cleaned on a regular basis to maintain the ability to resist corrosion. The surface of stainless steel has a protective layer that creates a protective shield against oxidation; which makes it durable and long lasting. Protecting this layer is important to ensure the longevity of this product.

Cleaning stainless steel products is an easy task when done regularly:

- Clear away all food and water deposits from the surface with a microfiber cloth or soft sponge; don't use abrasive materials as they have a negative impact on the protective layer
- Once cleared of debris, go over the surface with a food safe stainless steel cleaner, bicarb soda or mild detergent and water. The best chemicals for stainless steel contain alkaline and don't have chloride in them
- To remove stubborn stains, use a good quality stainless steel cleaner and non abrasive cloth
- Rinse thoroughly with clean fresh water
- Towel dry the product with a soft dry absorbent cloth after cleaning and use. This will prevent mineral deposits building up on the surface of the product
- Once dry, use a food safe stainless steel or metal polish
- Follow the grain of the metal to ensure the best results and to avoid further damage to the surface
- Always keep the product clean and dry when not in use
- Don't leave soaps and other cleaners on your stainless steel product overnight
- Don't leave damp sponges or cloths on the inside or edge of the product when not in use

TIP - Cleaning your stainless steel equipment after each use as above will ensure the product remains in good condition.

## PACKING LIST - T-3MCSKIT-E08

1 x T-3M61689 - Exposed Wall Mount Tap Body, 1 x T-3M2927-SR - Spout Adaptor, 1 x T-3MSS-CSSEW - Standard Cleaners Sink Spout, T-3MSS-CSTSB - Cleaners Sink Spout Bracket, 1 x Food Grade Grease, 1 x Installation Instructions, 1 x Warranty Certificate