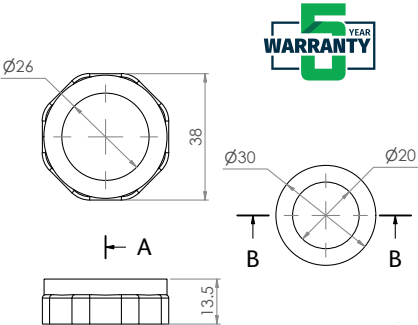


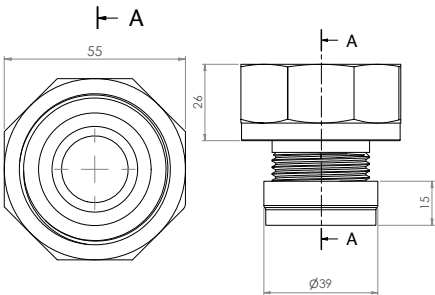
Plumbing & Sanitary

Adaptors

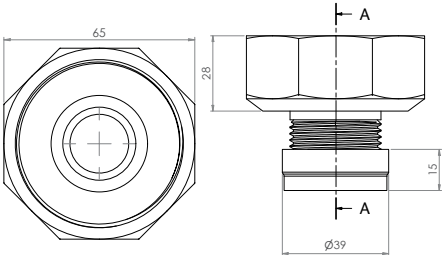
URNNW: This nut and washer is chrome plated. It comes with a reducing washer, which allows it to accommodate 20mm or 25mm sparge pipes



URNNW-1: This sparge adaptor is chrome plated and reduces from a 40mm thread to a 20mm or 25mm sparge pipe



URNNW-2: Chrome Plated Sparge Adaptor. 50mm FI BSP to 25mm BSP Reducer



URNNW-3: This nut and washer is chrome plated. It accommodates 40mm sparge pipes

