

Storage & Hardware



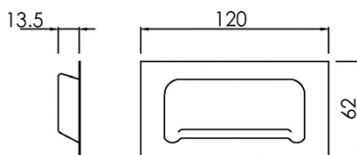
Drawer Handles & Pulls



FH-41



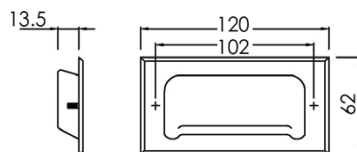
Flush Mount Type (Weld In)



FH-43



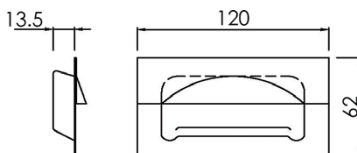
Bevelled Edge With Fixing Studs



FH-44



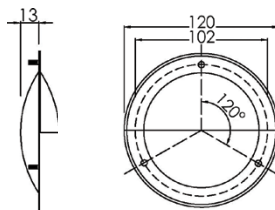
With Grip Flush Mount Type (Weld In)



FH-45



120mm Diameter With Grip and Fixing Studs



All products are made from 0.6mm Stainless Steel. No. 4 Brush Finish.