

Sinks & Basins



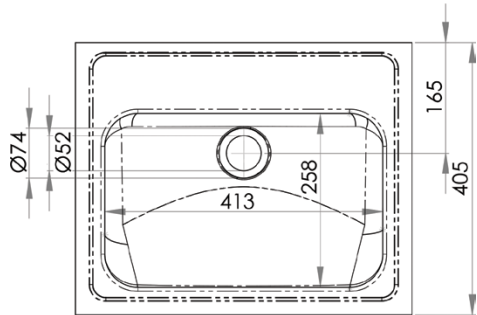
Inset Hand Basin

HBF01

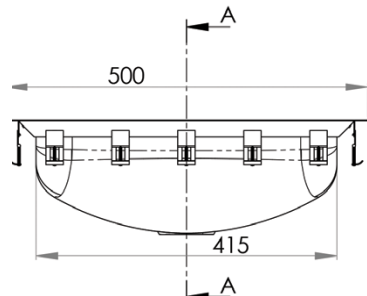
- 11.5 litre capacity
- Constructed from 1mm 304 grade stainless steel
- Mirror polish finish
- 40mm outlet – Suits PW40 & SSBW-40
- Comes complete with fixing clips and seal
- Available in 1, 2 and 3 tap hole configurations on request
- Taphole position and size to be indicated when ordering



Top



Front



Cross Section

