

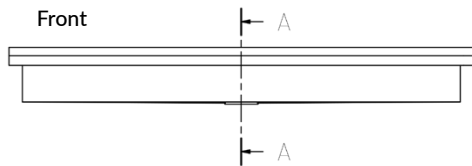
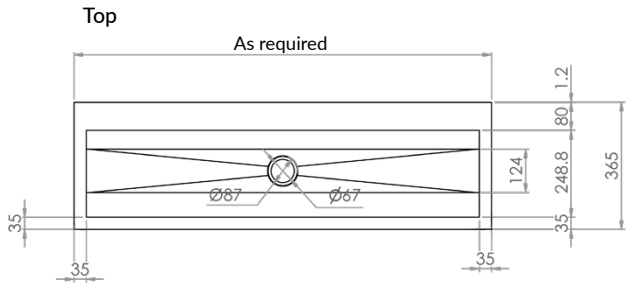
Troughs



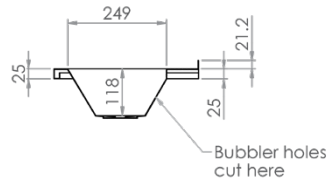
Walls End Pattern Trough

M-PT-7

- Constructed from 1.2mm 304 or 316 grade satin stainless steel
- Tap holes as required
- Available pre-plumbed
- Length as required - max 4000mm
- Outlet as required
- Radius external corners optional
- Splashback height modified on request
- Available with optional lockable lid
- Flat bar wall brackets with pre drilled fixing holes
- Custom made products incur a lead time



Side



Optional pre-plumbing available with your choice of tapware

Pillar Taps

45° Bubblers



Suggested mounting height for drinking trough:

Infant - 550mm

Primary - 700mm

Secondary - 900mm

Suggested mounting height for wash trough:

Infant - 550mm

Primary - 650mm

Secondary - 700mm