

Commercial Tapware



GUARDIAN[®] TAPWARE

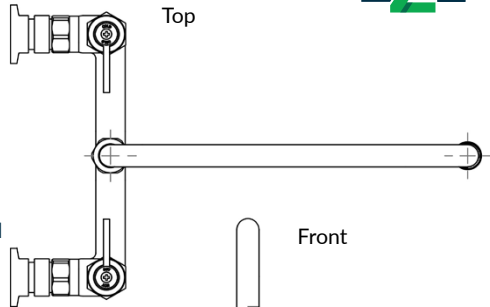
Exposed Wall Mount Body with Spout

T-3MEW06 – 6" spout

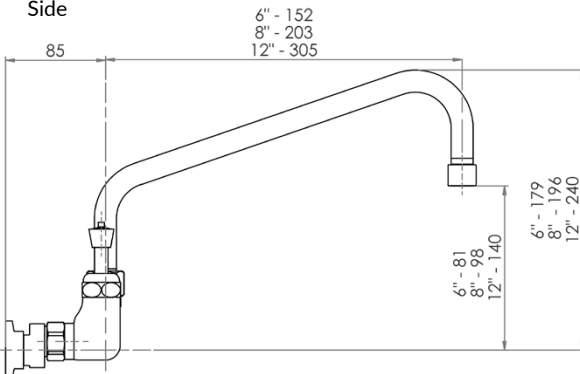
T-3MEW08 – 8" spout

T-3MEW12 – 12" spout

- Full S/S construction
- Exposed wall mount tap body including spreaders and ½ turn rising spindles
- Available with a 6", 8" or 12" spout – 4 star 7.5LPM
- Working pressure range 150kPa-500kPa
- Maximum operating temperature 80 degrees



Side



Back

