

Storage & Hardware

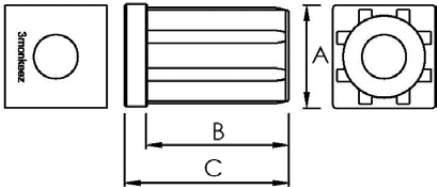
Nylon Leg Insert



FH-17
FH-18



Nylon Leg Insert - Square Tube

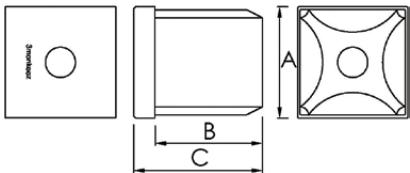


| PRODUCT CODE | A | B | C | THREAD |
|--------------|----|----|----|--------|
| FH-17 | 25 | 55 | 62 | M16 |
| FH-18 | 32 | 55 | 62 | M16 |

FH-19



Nylon Leg Insert - Square Tube

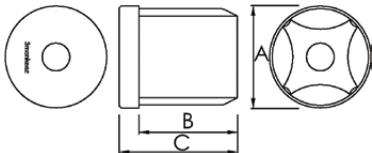


| PRODUCT CODE | A | B | C | THREAD |
|--------------|----|----|----|--------|
| FH-19 | 38 | 50 | 60 | M16 |

FH-20



Nylon Leg Insert - Round Tube



| PRODUCT CODE | A | B | C | THREAD |
|--------------|----|----|----|--------|
| FH-20 | 38 | 50 | 60 | M16 |

To fit tube of 1.2mm or 1.6mm wall thickness.
All measurements in mm.