



Sinks and Basins

3monkeez®
innovate. create. deliver.



2023

3monkeez®

www.3monkeez.com.au
sales@3monkeez.com.au

3monkeez[®]

MISSION STATEMENT

Put people first. Build a great product.
Reinvent industry expectations.

At 3monkeez, we understand that building a great quality and reliable product is only part of the story.

We provide an experience for our customers that exceeds expectations and makes us a trusted supplier of commercial plumbing and catering products across Australia. By putting people first our highly trained team can not only provide the right product and support, they also work closely with our customers to build long-lasting and rewarding relationships.

Through our commitment to manufacturing exceptional products and offering an unmatched experience for our customers we always strive to exceed and reinvent customer expectations when it comes to dealing with 3monkeez.

GUARDIAN[®]
TAPWARE



CLEANAJET[®]
STAINLESS STEEL



People are at the centre of everything we do. We provide industry leading customer service with a highly trained team of professionals available across Australia.



As a supplier of commercial stainless steel products for over 30 years the quality of our products matter to us. Our products will always provide creative and reliable solutions.



We are committed to providing innovative solutions that exceed customer expectations through our customer service, products, resources and unbeatable delivery times.

The Stainless Steel Advantage

Contents

1.2mm Hand Fabricated Premium Bowls	4	Jumbo Basin	26-28
1.5mm Hand Fabricated Premium Bowls	5	Public Amenities Hand Basin	29
1.2mm Hand Fabricated Economy Bowls	6	Round Wall Mounted Drinking Fountain with Bubbler Landing	30
1.5mm Laboratory Bowls	7	Round Disabled Compliant Hand Basin	31
Pressed Sink Bowls	8	Square Disabled Compliant Hand Basin	32
Round Pressed Sink Bowls	9	Square Hands Free Knee Operated Basin	33-38
Inset Sink	10	Round Hands Free Knee Operated Basin - Timed Flow	39-41
Inset Bar Sink	11	Cleaners Sink with Brackets	42
Inset Hand Basin	12	Cleaners Sink with Legs	43
Wall Mounted Hand Basin	13-18	Flat Splashbacks	44
Compact 11L Hand Basin	19	Conical Flushing Rim Sink - 350mm	45
Wall Mounted Hand Basin with Splashback	20	Conical Flushing Rim Sink - 450mm	46
Round Hand Basin	21	Square to Conical Flushing Rim Sink-350mm	47
Round Hand Basin with 300mm Shroud	22	Square to Conical Flushing Rim Sink-450mm	48
Corner Hand Basin	23		
Compact Hand Basin	24-25		

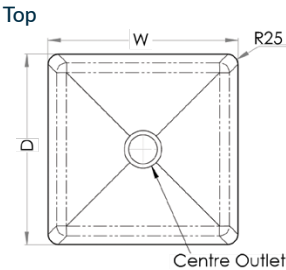


Sinks & Basins

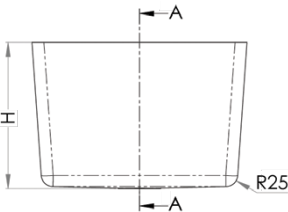


1.2mm Hand Fabricated Premium Bowls

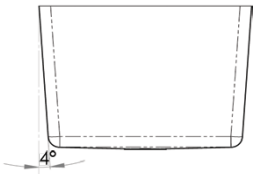
- Standard outlet sizes as per chart
- Directional satin polish
- 90mm outlet available on request for HF10 and HF12 - This outlet suits BW90S, BW90L, SSBW, SCRAP-S-90, SCRAP-S-90-316
- 127mm outlet available on request. This outlet suits SSBW-1, SCRAP-S and SCRAP-S316
- Centre outlet
- Cross breaks to the outlet
- Raw edge ready for welding
- Sound deadening material on bottom
- One piece construction
- Custom sizes available on request - lead times apply



Front



Cross Section



1.2MM 304 GRADE STAINLESS STEEL

PRODUCT CODE	W (mm)	D (mm)	H (mm)	OUTLET	CAPACITY
HF09	305	355	170	90	17L
HF10	300	250	200	50	13.3L
HF12	300	300	200	50	16.5L
HF13	350	300	300	90	27.5L
HF16	350	450	300	90	42.5L
HF14	400	350	300	90	37.5L
HF11	400	400	300	90	43.3L
HF15	450	300	300	90	36L
HF403030	400	300	300	90	35L
HF453520	450	350	200	90	31.5L
HF20	450	400	300	90	49L
HF17	450	450	300	90	55.5L
HF504030	500	400	300	90	56L
HF505040	500	500	400	90	100L
HF18	530	380	300	90	55.3L
HF21	550	450	300	90	68.5L
HF19	600	450	300	90	75L
HF22	800	500	300	90	113L



Sinks & Basins

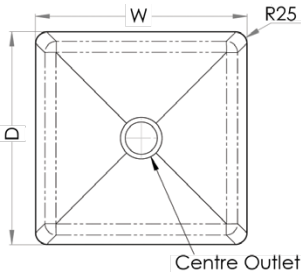


1.5mm Hand Fabricated Premium Bowls

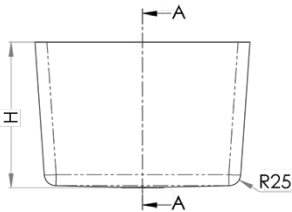
- Standard outlet sizes as per chart
- Directional satin polish
- 90mm outlet available on request. This outlet suits BW90S, BW90L, SSBW, SCRAP-S-90, SCRAP-S-90-316
- 127mm outlet available on request. This outlet suits SSBW-1, SCRAP-S and SCRAP-S316
- Centre outlet
- Cross breaks to the outlet
- Raw edge ready for welding
- Sound deadening material on bottom
- One piece construction
- Custom sizes available on request - lead times apply



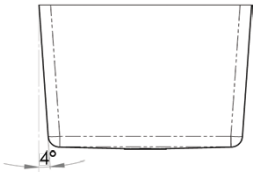
Top



Front



Cross Section



1.5MM 316 GRADE STAINLESS STEEL

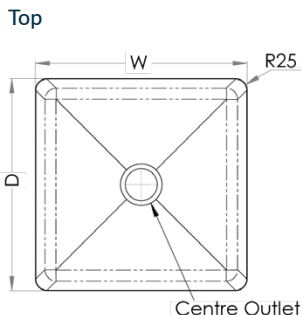
PRODUCT CODE	W (mm)	D (mm)	H (mm)	OUTLET	CAPACITY
HF14-316	400	350	300	50	37.5L
HF11-316	400	400	300	50	43.3L
HF20-316	450	400	300	50	49L
HF17-316	450	450	300	50	55.5L
HF17-316-90	450	450	300	90	55.5L
HF19-316	600	450	300	50	75L

Sinks & Basins

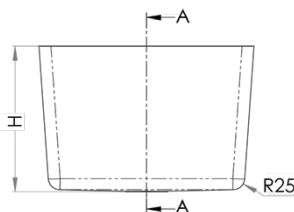


1.2mm Hand Fabricated Economy Bowls

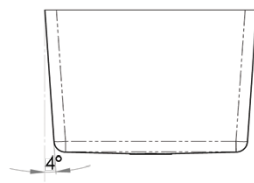
- Standard outlet sizes as per chart
- 90mm outlet available on request for HFS10 and HFS12. This outlet suits BW90S, BW90L, SSBW, SCRAP-S-90, SCRAP-S-90-316
- 127mm outlet available on request. This outlet suits SSBW-1, SCRAP-S and SCRAP-S316
- Centre outlet
- Cross breaks to the outlet
- Raw edge ready for welding
- Sound deadening material on bottom



Front



Cross Section



1.2MM 304 GRADE STAINLESS STEEL

PRODUCT CODE	W (mm)	D (mm)	H (mm)	OUTLET	CAPACITY
HFS10	300	250	200	50	13.3L
HFS12	300	300	200	50	16.5L
HFS16	350	450	250	90	36L
HFS14	400	350	250	90	32L
HFS11	400	400	250	90	36.5L
HFS20	450	400	250	90	41.5L
HFS17	450	450	250	90	47L
HFS19	600	450	250	90	63L

Sinks & Basins

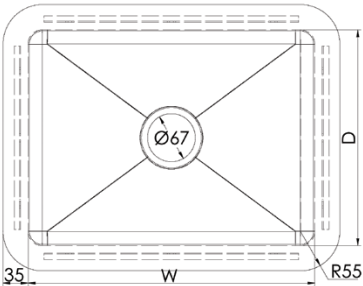


1.5mm Laboratory Bowls

- Constructed from 1.5mm acid resistant 316 grade stainless steel
- Satin finish
- 50mm centre outlet suits 50mm plug and waste or 50mm Scraptrap
- 90mm or 127mm outlet available on request. These outlets suit the Scraptrap range
- Cross breaks to the outlet
- 35mm flange
- Includes fixing clips and cut out template



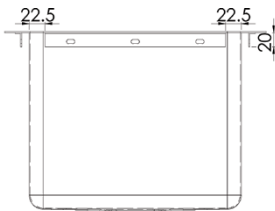
Top



Front



Side



1.2MM 316 GRADE STAINLESS STEEL

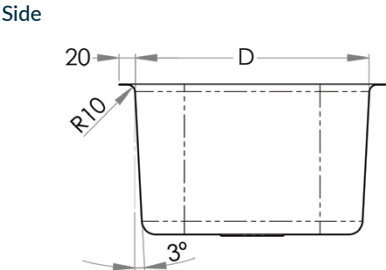
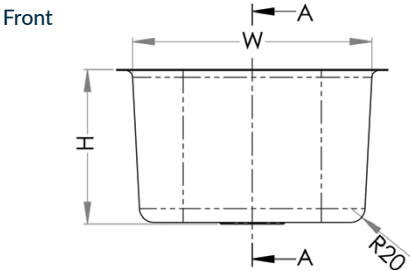
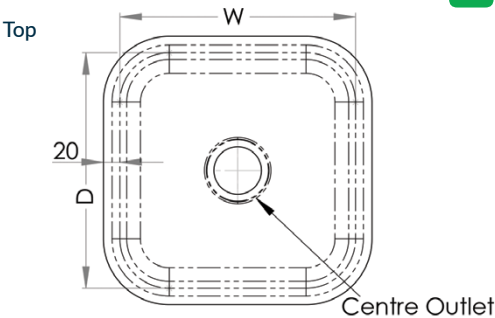
PRODUCT CODE	W (mm)	D (mm)	H (mm)	OUTLET	CAPACITY
LS-303025	300	300	250	50	22.5L
LS-403025	400	300	250	50	30L
LS-453525	450	350	250	50	39.4L
LS-404030	400	400	300	50	46.5L

Sinks & Basins



Pressed Sink Bowls

- Constructed from 1mm 304 grade stainless steel
- 20mm flange
- Centre outlet
- Satin polish finish



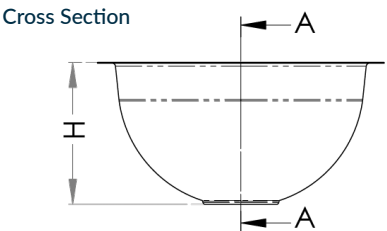
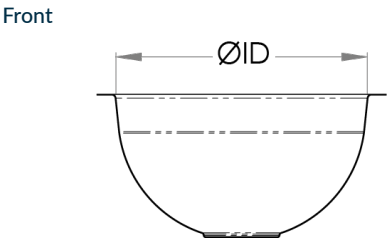
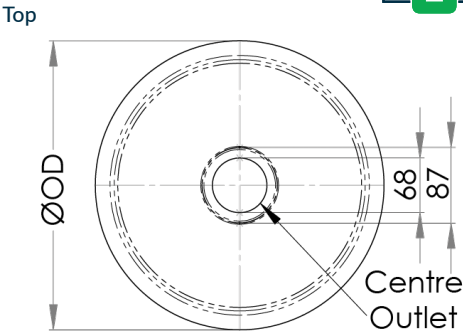
PRODUCT CODE	W (mm)	D (mm)	H (mm)	OUTLET	CAPACITY
PB01	250	140	110	40	3L
PB02	290	250	165	50	10.4L
PB06	330	330	210	50	20.4L
PB08	350	250	170	50	13.1L
PB14	400	340	200	50	24.6L
PB20	450	380	200	50	31.4L
PB23	520	370	210	50	37L

Sinks & Basins



Round Pressed Sink Bowls

- Constructed from 1mm 304 grade stainless steel
- 20mm flange
- 50mm centre outlet - suits 50mm plug and waste or 50mm Scraptrap
- Mirror polish finish



PRODUCT CODE	W (mm)	D (mm)	H (mm)	OUTLET	CAPACITY
RB300	340	300	165	50	8.3L
RB385	425	385	165	50	10.3L

Sinks & Basins



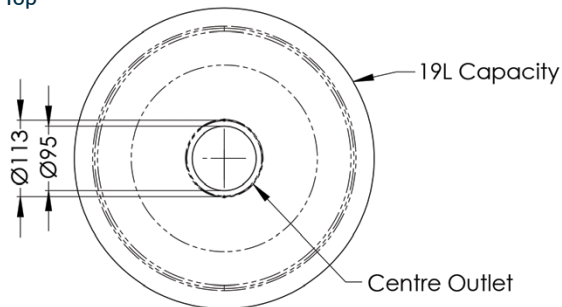
Inset Sink

RBF385

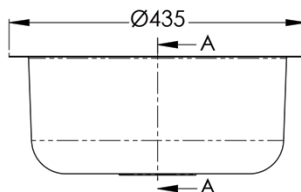
- 19 litre capacity
- Constructed from 0.9mm 304 grade stainless steel
- 25mm polished flange
- 90mm centre outlet
- Can be inset in any bench top
- Mirror polish finish



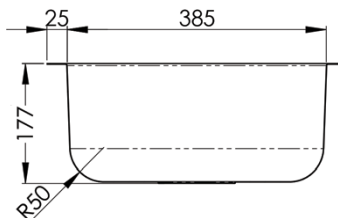
Top



Front



Side



Sinks & Basins



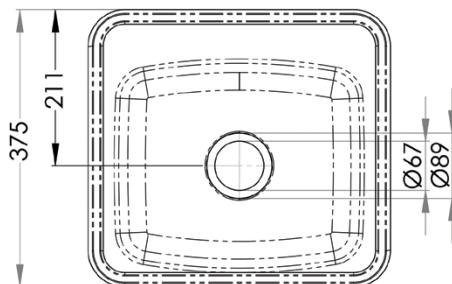
Inset Bar Sink

HBF

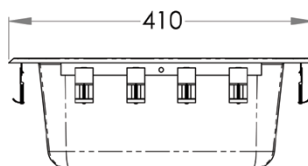
- 11.1 litre capacity
- Constructed from 0.9mm 304 grade stainless steel
- 50mm centre outlet suits 50mm plug and waste and 50mm Scraptrap
- Mirror polish finish
- Comes complete with fixing clips and seal
- Tap holes on request - Left or Right



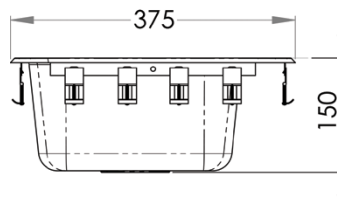
Top



Front



Side



Sinks & Basins



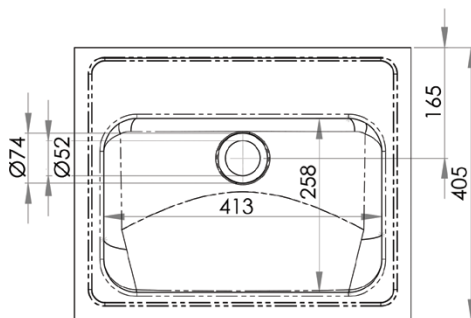
Inset Hand Basin

HBF01

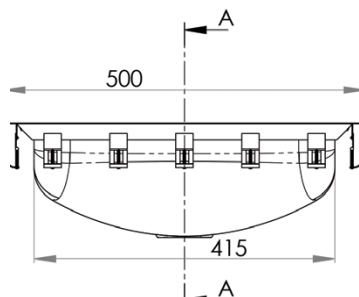
- 11.5 litre capacity
- Constructed from 1mm 304 grade stainless steel
- Mirror polish finish
- 40mm outlet – Suits PW40 & SSBW-40
- Comes complete with fixing clips and seal
- Available in 1, 2 and 3 tap hole configurations on request
- Taphole position and size to be indicated when ordering



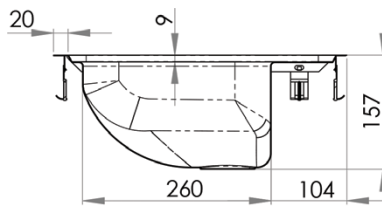
Top



Front



Cross Section



Sinks & Basins



Wall Mounted Hand Basin

HB

HB-1TH

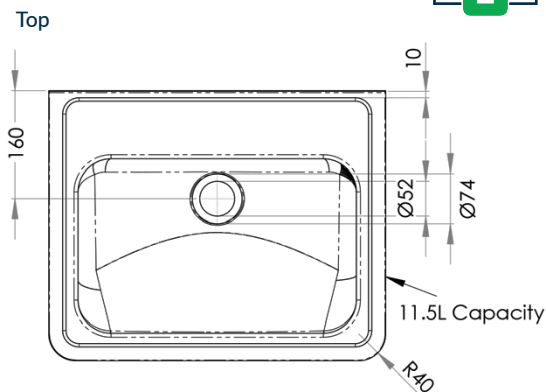
HB-2TH

HB-3TH

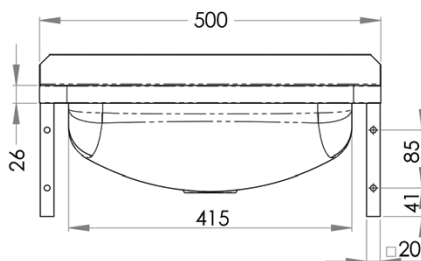
HBB (*Hand basin wall brackets*)

Brackets sold separately

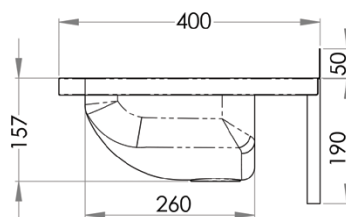
- 11.5 litre capacity
- Constructed from 1mm 304 grade stainless steel
- Radius fascia for safety
- Wall mounted
- 50mm splashback
- 40mm outlet – Suits PW40 & SSBW-40
- Mirror polish finish
- Available in 1, 2 or 3 tap hole configurations
- Taphole position and size to be indicated when ordering



Front



Cross Section



Use optional
SAFETEE-STRIP
for no sharp edges

3monkeez.com.au

Sinks & Basins



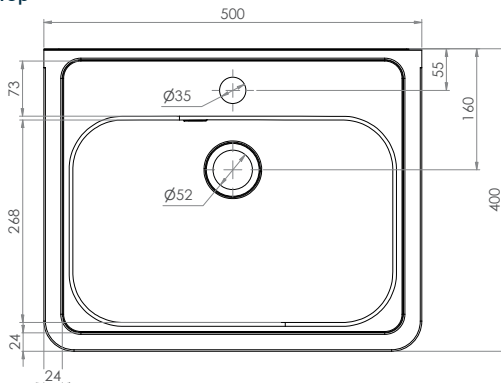
Wall Mounted Hand Basin

HB-OF-1TH

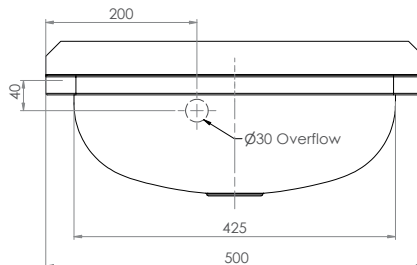
- 11.5 litre capacity
- Constructed from 1mm 304 grade stainless steel
- Radius fascia for safety
- Wall mounted
- 50mm splashback
- 40mm outlet – Suits PW40 & SSBW-40
- Mirror polish finish
- 1 pre punched 35mm centre tap hole
- Overflow hole included



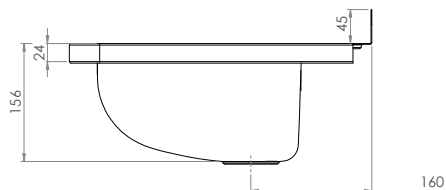
Top



Front



Cross Section



Use optional
SAFETEE-STRIP
for no sharp edges

3monkeez.com.au

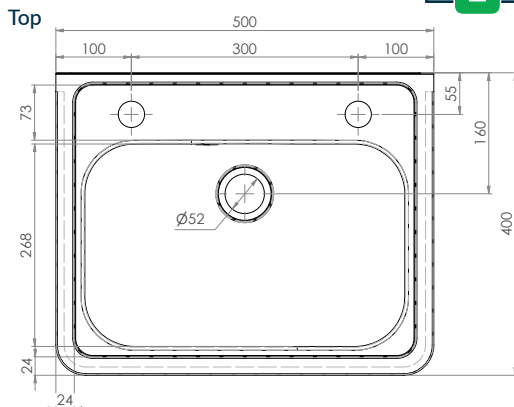
Sinks & Basins



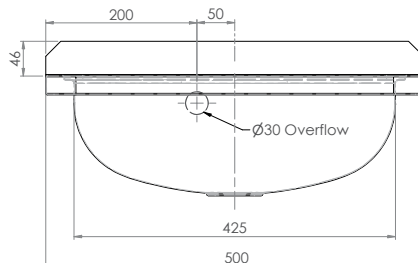
Wall Mounted Hand Basin

HB-OF-2TH

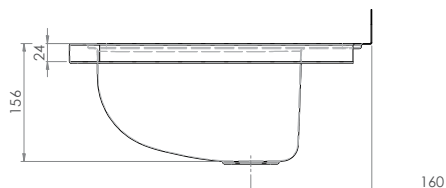
- 11.5 litre capacity
- Constructed from 1mm 304 grade stainless steel
- Radius fascia for safety
- Wall mounted
- 50mm splashback
- 40mm outlet – Suits PW40 & SSBW-40
- Mirror polish finish
- 2 pre punched tap holes – left and right 35mm
- Overflow hole included



Front



Cross Section



Use optional
SAFETEE-STRIP
for no sharp edges

3monkeez.com.au

Sinks & Basins



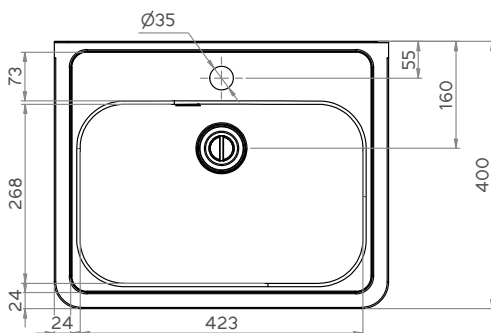
Wall Mounted Hand Basin

AB-HB1-OF

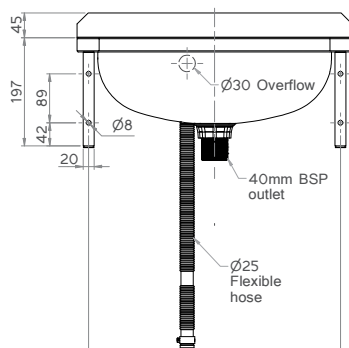
- 11.5 litre capacity
- Constructed from 1mm 304 grade stainless steel
- Radius fascia for safety
- Wall mounted
- 50mm splashback
- 40mm outlet
- Mirror polish finish
- 1 pre punched 35mm centre tap hole
- Includes overflow, brackets, and Plug and Waste



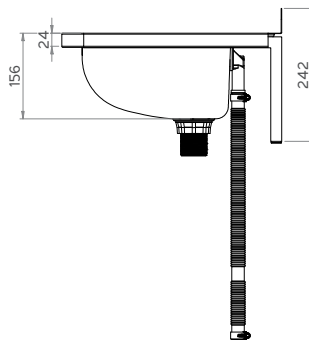
Top



Front



Cross Section



Use optional
SAFETEE-STRIP
for no sharp edges



Includes OFK2

3monkee.com.au

Sinks & Basins



Wall Mounted Hand Basin

AB-HB2-OF

- 11.5 litre capacity
- Constructed from 1mm 304 grade stainless steel
- Radius fascia for safety
- Wall mounted
- 50mm splashback
- 40mm outlet
- Mirror polish finish
- 2 pre punched 35mm centre tap holes
- Includes overflow, brackets, and Plug and Waste



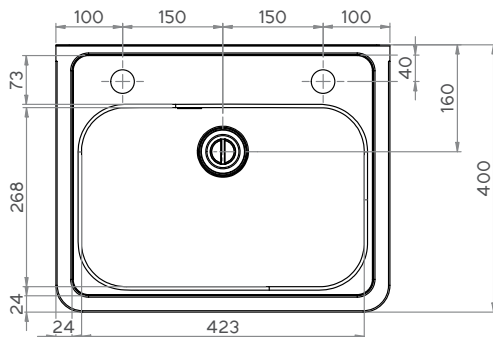
Use optional
SAFETEE-STRIP
for no sharp edges



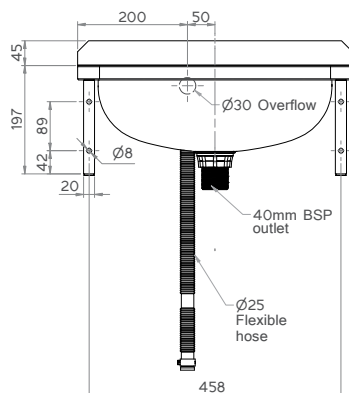
Includes OFK2



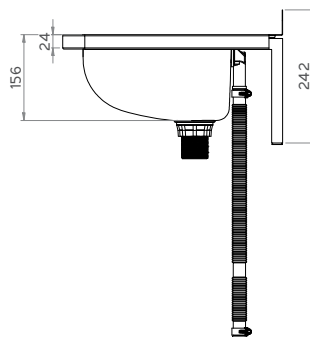
Top



Front



Cross Section



3monkee.com.au

Sinks & Basins



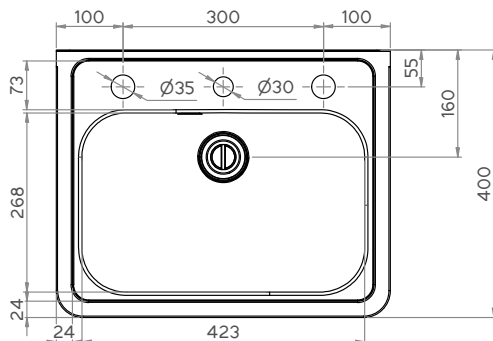
Wall Mounted Hand Basin

AB-HB3-OF

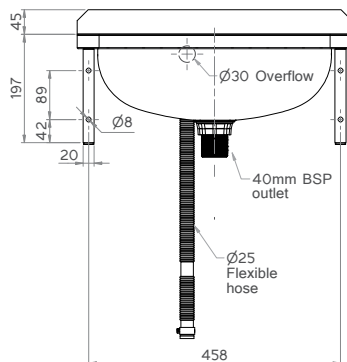
- 11.5 litre capacity
- Constructed from 1mm 304 grade stainless steel
- Radius fascia for safety
- Wall mounted
- 50mm splashback
- 40mm outlet
- Mirror polish finish
- 3 pre-punched holes, left and right holes 35mm, centre hole 30mm
- Includes overflow, brackets, and Plug and Waste



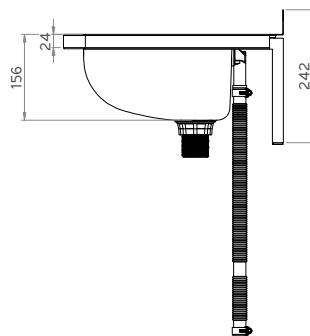
Top



Front



Cross Section



Use optional
SAFETEE-STRIP
for no sharp edges



Includes OFK2

3monkeez.com.au

Sinks & Basins



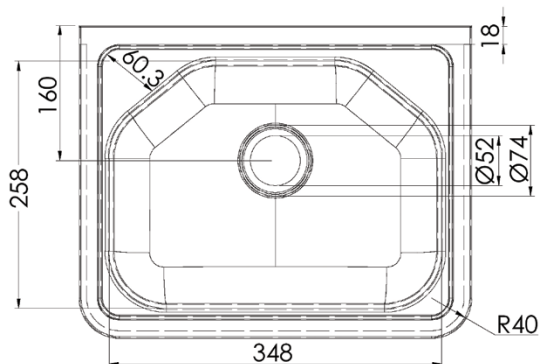
Compact 11L Hand Basin

HB11C

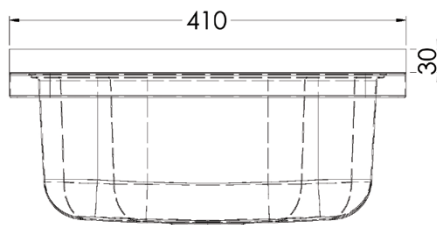
- 304 grade stainless steel
- Space saving design
- 11L capacity
- 30mm splashback
- Mirror polish finish
- Full stainless steel brackets
- Complete with 40mm plug and waste
- Left or right tap hole on request
- Taphole position and size to be indicated when ordering



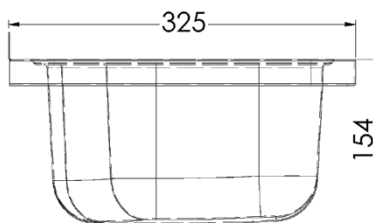
Top



Front



Side



Use optional SAFETEE-STRIP
for no sharp edges

Sinks & Basins



Wall Mounted Hand Basin with Splashback

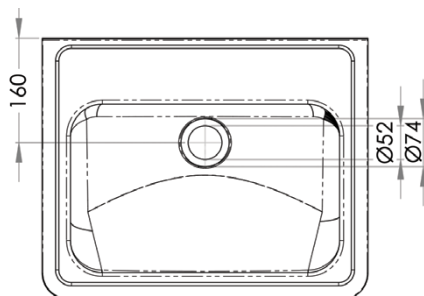


HB300SB

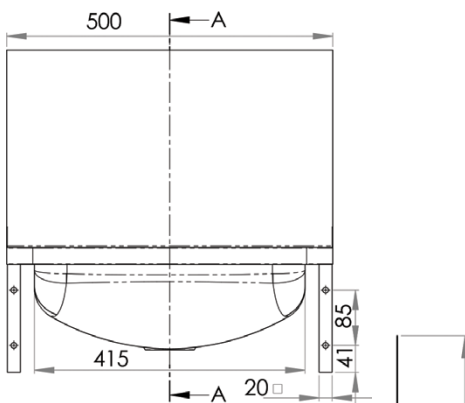
- 11.5 litre capacity
- Constructed from 1mm 304 grade stainless steel
- 300mm splashback
- 40mm outlet - Suits PW40 & SSBW-40
- Comes complete with wall brackets
- Mirror polish finish
- Available in 1, 2 or 3 tap hole configurations
- Taphole position and size to be indicated when ordering



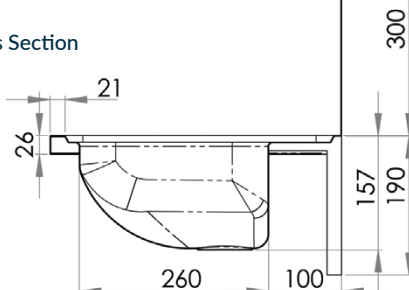
Top



Front



Cross Section



Use optional SAFETEE-STRIP
for no sharp edges

Sinks & Basins



Round Hand Basin

HBR

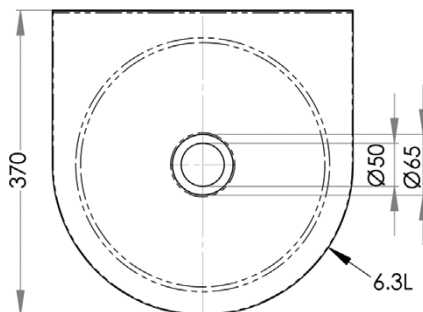
- 6.3 litre capacity
- Constructed from 1mm 304 grade stainless steel
- 300mm bowl diameter
- 50mm splashback
- 40mm outlet – Suits PW40 & SSBW-40
- Comes complete with wall brackets
- Left or right tap holes on request
- Taphole position and size to be indicated when ordering



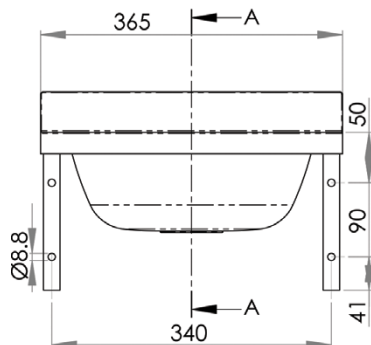
Use optional SAFETEE-STRIP
for no sharp edges



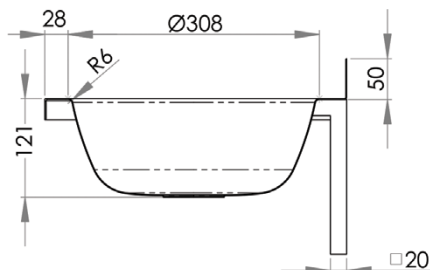
Top



Front



Cross Section



Sinks & Basins



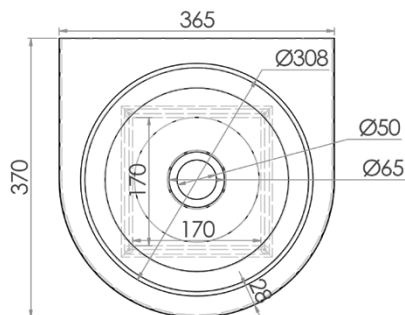
Round Hand Basin with 300mm Shroud



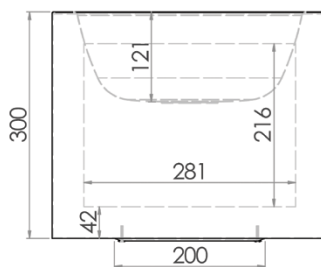
HBRS

- 6.3 litre capacity
- Constructed from 1mm 304 grade stainless steel
- 300mm shroud
- 300mm bowl diameter
- 40mm outlet – Suits PW40 & SSBW-40
- Integrated wall bracket
- Left or right tap holes on request
- Taphole position and size to be indicated when ordering

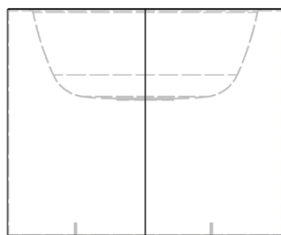
Top



Front



Side



Sinks & Basins



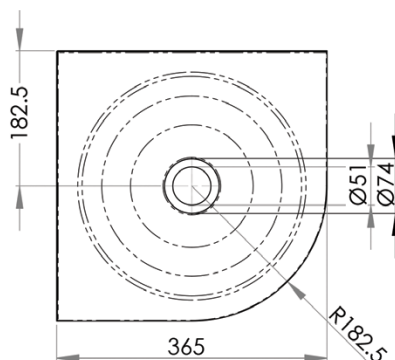
Corner Hand Basin

HBCR

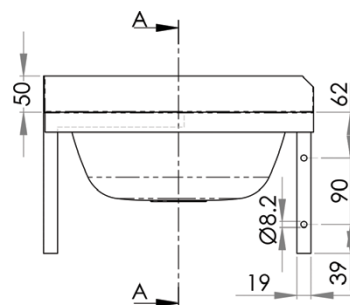
- 6.3 litre capacity
- Constructed from 1mm 304 grade stainless steel
- 300mm bowl diameter
- 50mm splashback
- 40mm outlet – Suits PW40 & SSBW-40
- Comes complete with wall brackets
- Left, right or centre tap hole on request
- Taphole position and size to be indicated when ordering



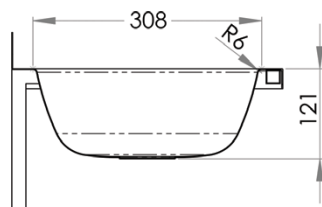
Top



Front



Cross Section



Use optional SAFETEE-STRIP
for no sharp edges

Sinks & Basins



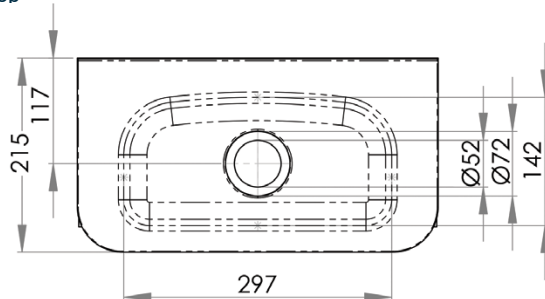
Compact Hand Basin

HBC

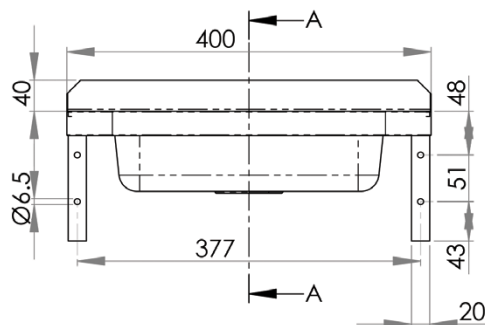
- 3.1 litre capacity
- Constructed from 1mm 304 grade stainless steel
- Radius fascia for safety
- 40mm splashback
- 40mm outlet – Suits PW40 & SSBW-40
- Comes complete with wall brackets
- Left or right tap hole on request
- Taphole position and size to be indicated when ordering



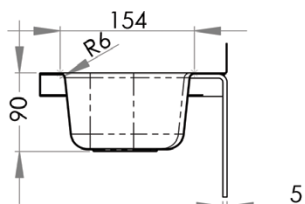
Top



Front



Cross Section



Use optional SAFETEE-STRIP
for no sharp edges

Sinks & Basins



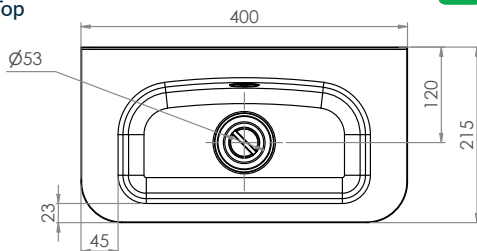
Compact Hand Basin with Overflow



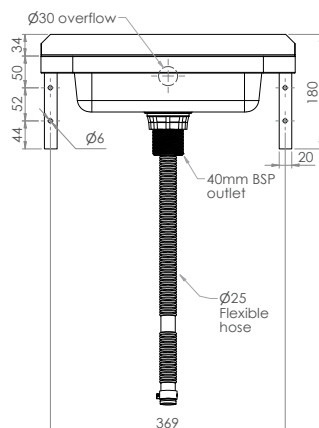
AB-HBC-OF

- 3.1 litre capacity
- Constructed from 1mm 304 grade stainless steel
- Radius fascia for safety
- 40mm splashback
- 40mm outlet – Suits PW40 & SSBW-40
- Mirror polish finish
- Available in 1 or 2 tap hole configurations
- Taphole size to be indicated when ordering
- Includes overflow, brackets, and Plug and Waste

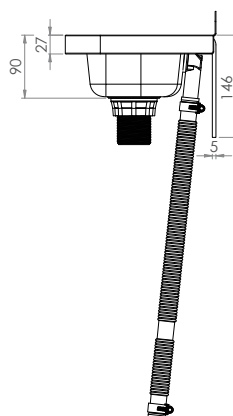
Top



Front



Cross Section



Use optional
SAFETEE-STRIP
for no sharp edges



Includes OFK2

3monkeez.com.au

Sinks & Basins



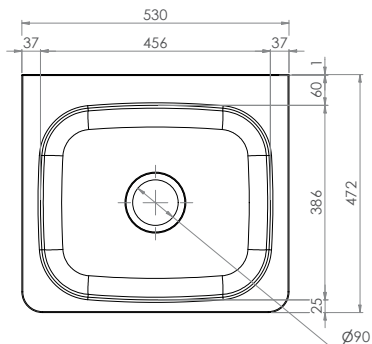
Jumbo Basin

AB-JB

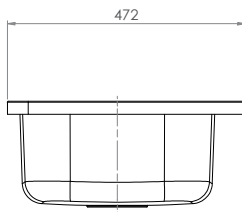
- 31.2L Capacity
- Constructed from 1mm 304 grade stainless steel
- 50mm Splashback
- Mirror Polish Finish
- 90mm outlet - Suits basket waste or 90mm Scraptrap



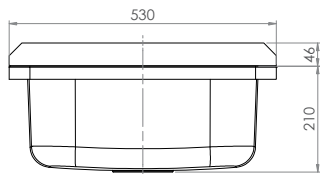
Top



Side



Front



Use optional
SAFETEE-STRIP
for no sharp edges



Optional Overflow
Kit available

3monkeez.com.au

Sinks & Basins



Jumbo Basin

AB-JB-B
(with wall brackets)

- 31.2L Capacity
- Constructed from 1mm 304 grade stainless steel
- 50mm Splashback
- Mirror Polish Finish
- 90mm outlet - Suits basket waste or 90mm Scraptrap



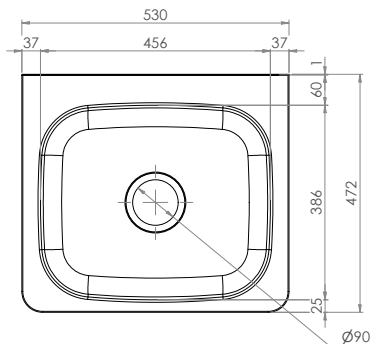
Use optional
SAFETEE-STRIP
for no sharp edges



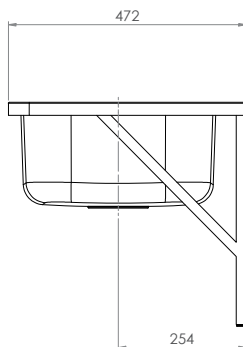
Optional Overflow
Kit available



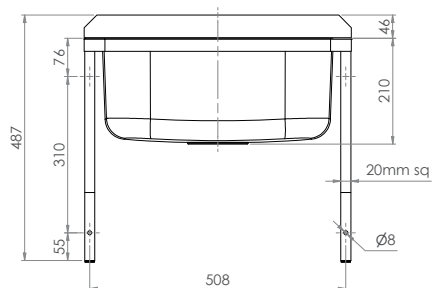
Top



Side



Front



3monkeez.com.au

Sinks & Basins



Jumbo Basin

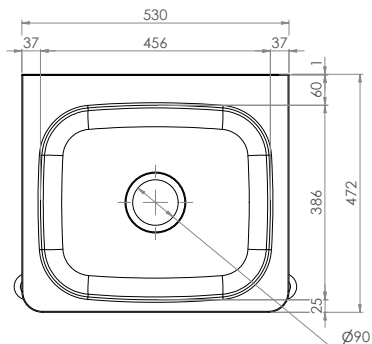
AB-JB-L

(with legs & adjustable feet)

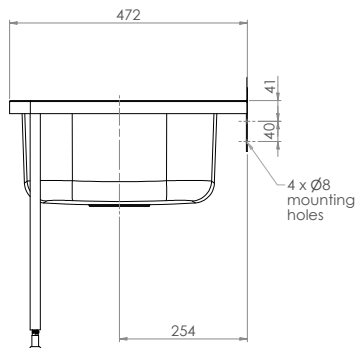
- 31.2L Capacity
- Constructed from 1mm 304 grade stainless steel
- 50mm Splashback
- Mirror Polish Finish
- 90mm outlet - Suits basket waste or 90mm Scraptrap



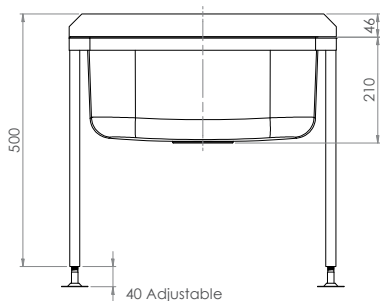
Top



Side



Front



Use optional SAFETEE-STRIP for no sharp edges



Optional Overflow Kit available

3monkeez.com.au

Sinks & Basins



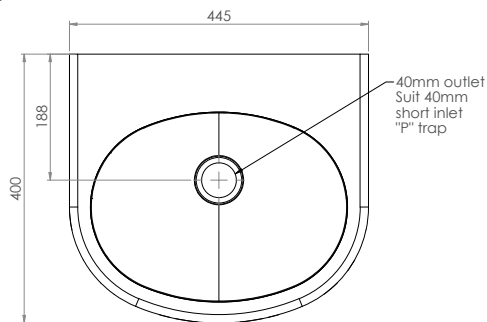
Public Amenities Hand Basin

HB-VR

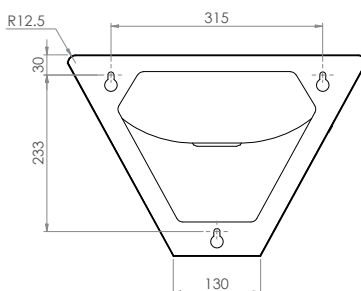
- 7L capacity
- Constructed from 1.2mm 304 grade stainless steel
- Satin finish
- 40mm outlet – Suits PW40 & SSBW-40
- Concealed plumbing
- Suits P trap installation
- Integrated wall bracket
- Access panel with vandal resistant screws
- 80mm rear hob for multiple tapware choices
- Left, right or centre tap holes on request
- Taphole position and size to be indicated when ordering



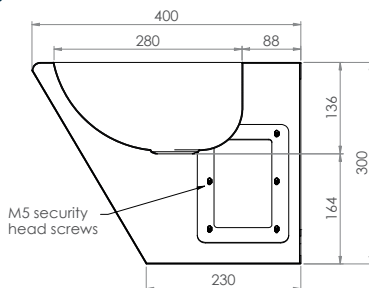
Top



Back



Side



Sinks & Basins



Round Wall Mounted Drinking Fountain with Bubbler Landing

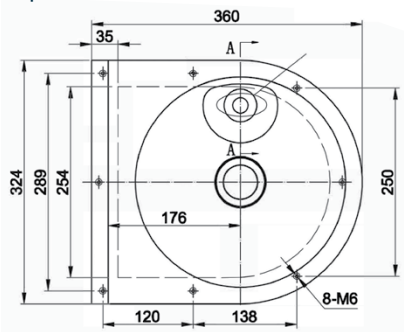


HBR-DF

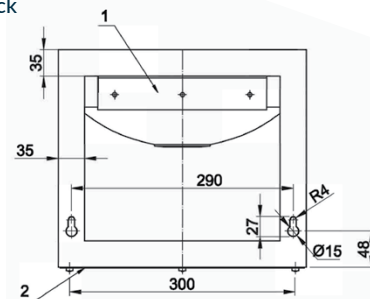
- 1.2mm 304 grade stainless steel
- 215mm shroud
- 75mm splashback
- 40mm outlet- Suits PW40 & SSBW-40
- Concealed plumbing
- Suits P trap installation
- Integrated wall bracket
- Push button or lever handle bubbler options available



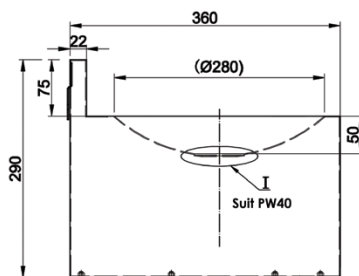
Top



Back



Side



Sinks & Basins

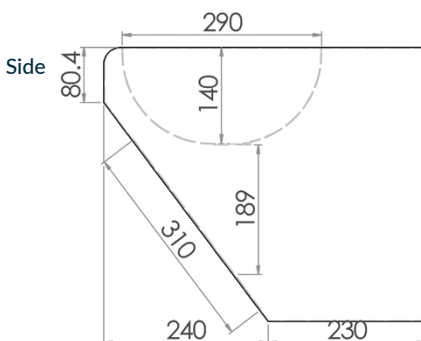
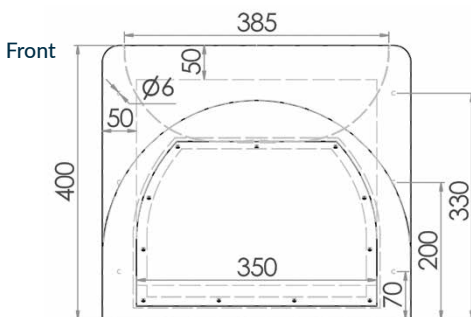
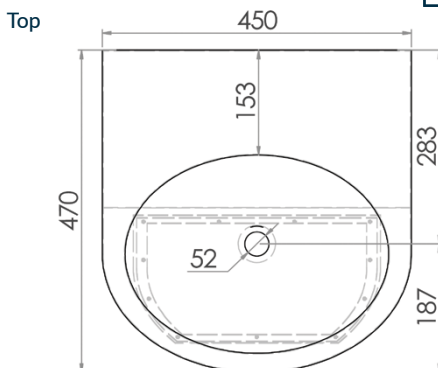


Round Disabled Compliant Hand Basin



HBD-R

- AS1428 compliant
- 9 litre capacity
- Constructed from 1.2mm 304 grade stainless steel
- Satin finish
- 40mm outlet – Suits PW40 & SSBW-40
- Access panel with vandal resistant screws
- Concealed plumbing and trap
- Suits compact P trap installation
- Left, right or centre tap holes on request
- Taphole position and size to be indicated when ordering



Sinks & Basins



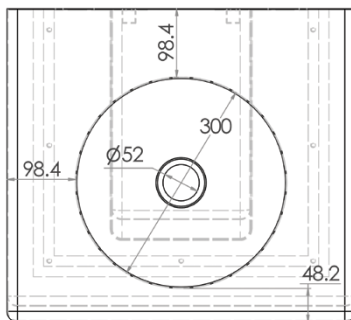
Square Disabled Compliant Hand Basin



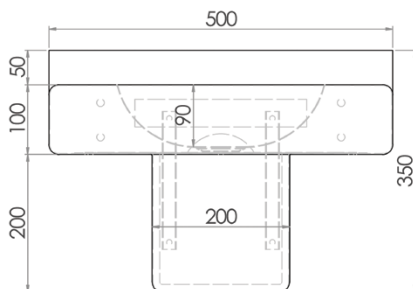
HBD-S

Top

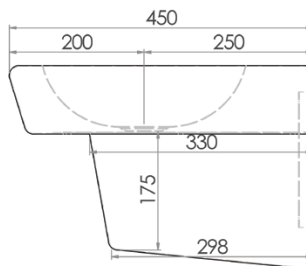
- AS1428 compliant
- 3.5 litre capacity
- Constructed from 1.2mm 304 grade stainless steel
- 300mm diameter bowl
- Satin finish
- 50mm splashback
- 40mm outlet – Suits PW40 & SSBW-40
- Vandal resistant screws
- Concealed plumbing and trap
- Suits compact P trap installation
- Left, right or centre tap holes on request
- Taphole position and size to be indicated when ordering



Front



Side



Sinks & Basins



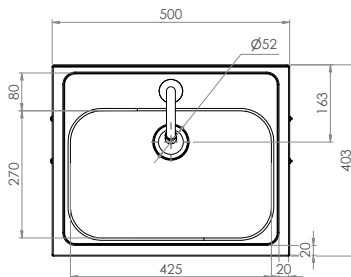
Hands Free Knee Operated Basin

AB-KNEEHT-1 (with tempering valve)

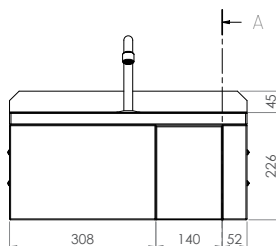
- 11.5L capacity
- Shroud - Constructed from 1.2mm 304 grade stainless steel
- Basin - Constructed from 1mm 304 grade stainless steel
- 50mm splashback
- 40mm outlet - Suits PW40 & SSBW-40
- 500kPa Maximum Working Pressure
- WELS 5 Star 6LPM



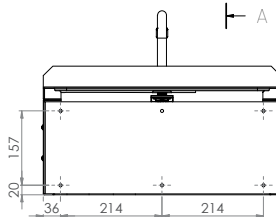
Top



Front

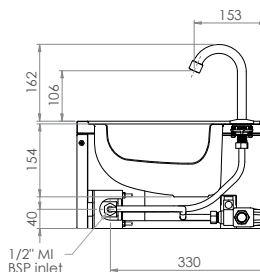


Back



Mounting Holes $\varnothing 6.8 \times 6$

Side



Suggested mounting height
from floor level for standard
use - 850mm-900mm



Tapware parts
have a 2 year
onsite warranty

Sinks & Basins



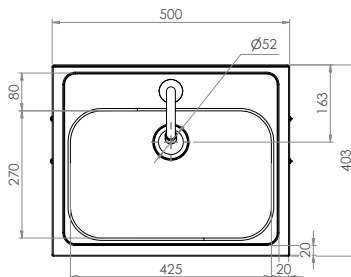
Hands Free Knee Operated Basin

AB-KNEEHBTMV-1 (with thermostatic mixing valve)

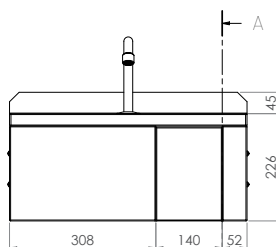
- 11.5L capacity
- Shroud - Constructed from 1.2mm 304 grade stainless steel
- Basin - Constructed from 1mm 304 grade stainless steel
- 50mm splashback
- 40mm outlet - Suits PW40 & SSBW-40
- 500kPa Maximum Working Pressure
- WELS 5 Star 6LPM



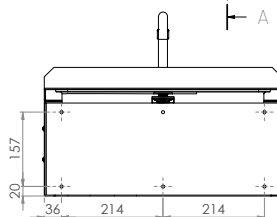
Top



Front

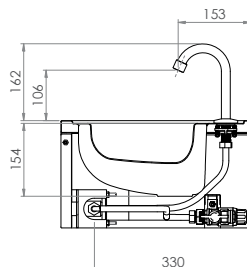


Back



Mounting Holes \varnothing 6.8 x 6

Side



Suggested mounting height
from floor level for standard
use - 850mm-900mm



Tapware parts
have a 2 year
onsite warranty

Sinks & Basins



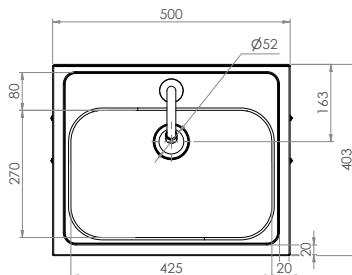
Hands Free Knee Operated Basin

AB-KNEEHB-1 (without temperature control valve)

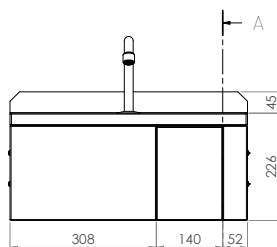
- 11.5L capacity
- Shroud - Constructed from 1.2mm 304 grade stainless steel
- Basin - Constructed from 1mm 304 grade stainless steel
- 50mm splashback
- 40mm outlet - Suits PW40 & SSBW-40
- 500kPa Maximum Working Pressure
- WELS 5 Star 6LPM



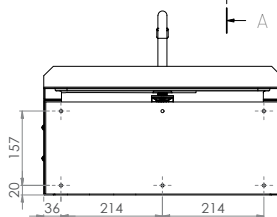
Top



Front

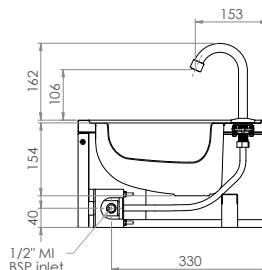


Back



Mounting Holes \varnothing 6.8 x 6

Side



Suggested mounting height from floor level for standard use - 850mm-900mm



Tapware parts have a 2 year onsite warranty

Sinks & Basins



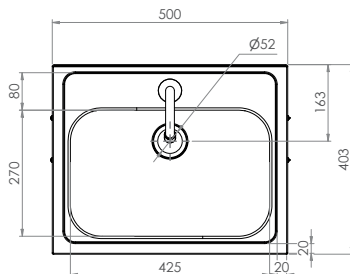
Hands Free Knee Operated Basin - Timed Flow



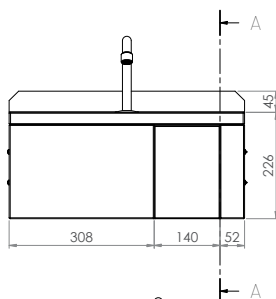
AB-KNEEHBT-TF (with tempering valve)

Top

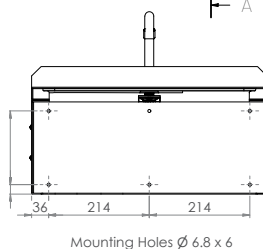
- 11.5L capacity
- Shroud - Constructed from 1.2mm 304 grade stainless steel
- Basin - Constructed from 1mm 304 grade stainless steel
- 18 second timed flow
- 50mm splashback
- 40mm outlet – Suits PW40 & SSBW-40
- 500kPa Maximum Working Pressure
- WELS 5 Star 6LPM



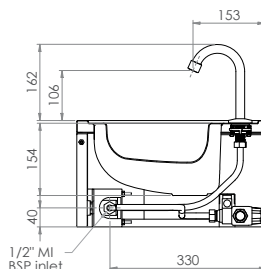
Front



Back



Side



Suggested mounting height
from floor level for standard
use - 850mm-900mm



Tapware parts
have a 2 year
onsite warranty

Sinks & Basins

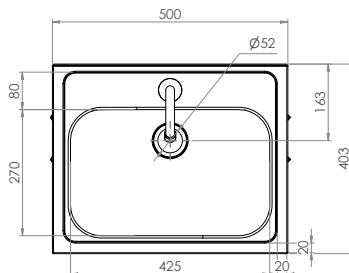


Hands Free Knee Operated Basin - Timed Flow

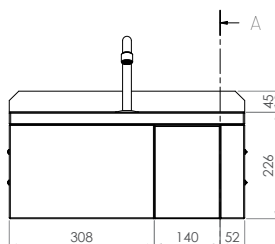
AB-KNEEHBTMV-TF (with *thermostatic mixing valve*)

- 11.5L capacity
- Shroud - Constructed from 1.2mm 304 grade stainless steel
- Basin - Constructed from 1mm 304 grade stainless steel
- 18 second timed flow
- 50mm splashback
- 40mm outlet – Suits PW40 & SSBW-40
- 500kPa Maximum Working Pressure
- WELS 5 Star 6LPM

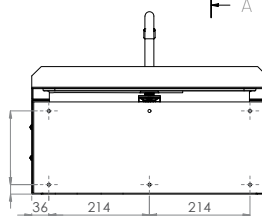
Top



Front

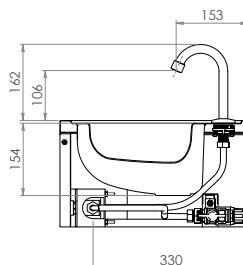


Back



Mounting Holes \varnothing 6.8 x 6

Side



Suggested mounting height from floor level for standard use - 850mm-900mm



Tapware parts have a 2 year onsite warranty

Sinks & Basins



Hands Free Knee Operated Basin - Timed Flow

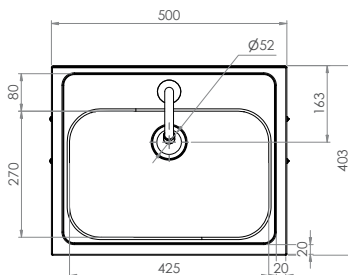
AB-KNEEHB-TF

(without temperature control valve)

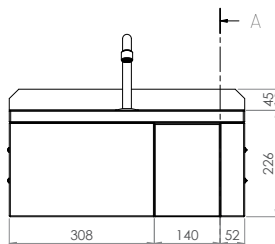
- 11.5L capacity
- Shroud - Constructed from 1.2mm 304 grade stainless steel
- Basin - Constructed from 1mm 304 grade stainless steel
- 18 second timed flow
- 50mm splashback
- 40mm outlet – Suits PW40 & SSBW-40
- 500kPa Maximum Working Pressure
- WELS 5 Star 6LPM



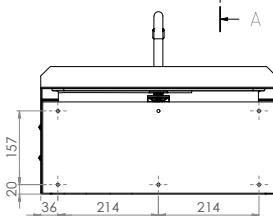
Top



Front

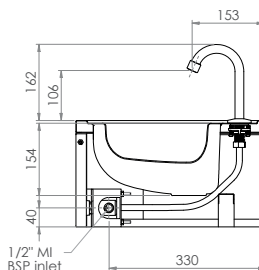


Back



Mounting Holes \varnothing 6.8 x 6

Side



Suggested mounting height
from floor level for standard
use - 850mm-900mm



Tapware parts
have a 2 year
onsite warranty

Sinks & Basins



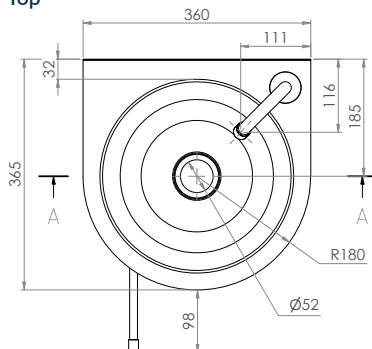
Round Hands Free Knee Operated Basin - Timed Flow



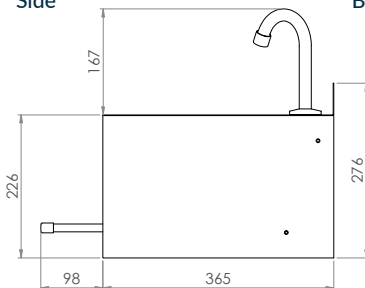
AB-KNEEHB-RT (with tempering valve)

- 6.3L capacity
- Shroud - Constructed from 1.2mm 304 grade stainless steel
- Basin - Constructed from 1mm 304 grade stainless steel
- 18 second timed flow
- 50mm splashback
- 40mm outlet - Suits PW40 & SSBW-40
- 500kPa Maximum Working Pressure
- WELS 5 Star 6LPM

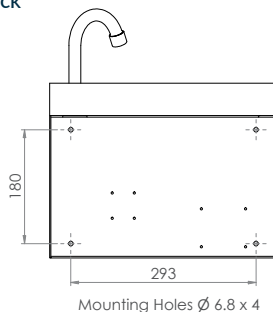
Top



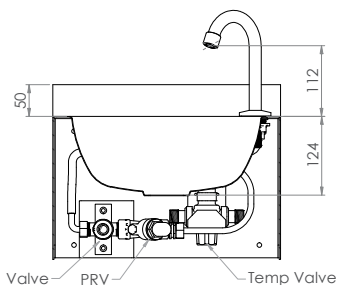
Side



Back



Front



Suggested mounting height from floor level for standard use - 850mm-900mm



Tapware parts have a 2 year onsite warranty

Sinks & Basins



Round Hands Free Knee Operated Basin - Timed Flow

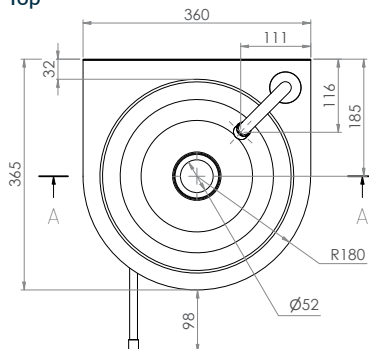
AB-KNEEHB-RTMV (with *thermostatic mixing valve*)

6.3L capacity

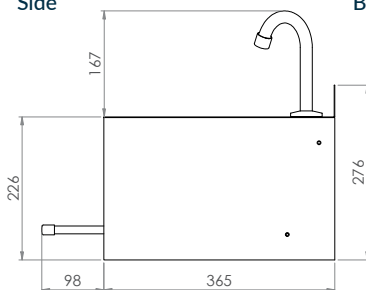
- Shroud - Constructed from 1.2mm 304 grade stainless steel
- Basin - Constructed from 1mm 304 grade stainless steel
- 18 second timed flow
- 50mm splashback
- 40mm outlet - Suits PW40 & SSBW-40
- 500kPa Maximum Working Pressure
- WELS 5 Star 6LPM



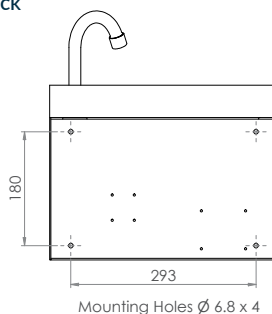
Top



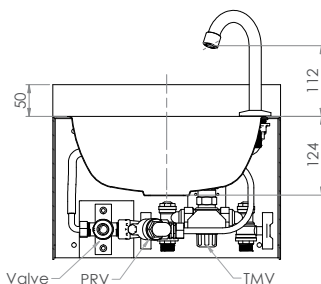
Side



Back



Front



Suggested mounting height from floor level for standard use - 850mm-900mm



Tapware parts have a 2 year onsite warranty

Sinks & Basins



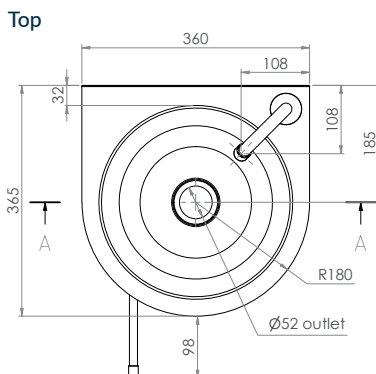
Round Hands Free Knee Operated Basin - Timed Flow



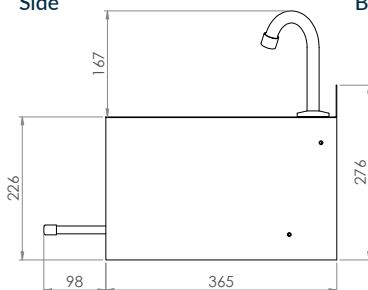
AB-KNEEHB-R

(without temperature control valve)

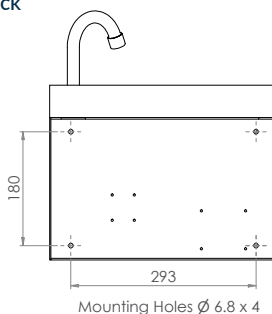
- 6.3L capacity
- Shroud - Constructed from 1.2mm 304 grade stainless steel
- Basin - Constructed from 1mm 304 grade stainless steel
- 18 second timed flow
- 50mm splashback
- 40mm outlet - Suits PW40 & SSBW-40
- 500kPa Maximum Working Pressure
- WELS 5 Star 6LPM



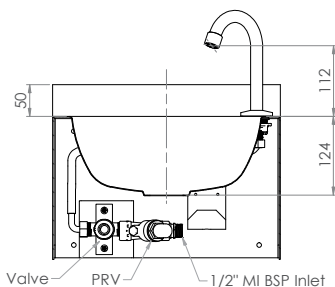
Side



Back



Front



Suggested mounting height from floor level for standard use - 850mm-900mm



Tapware parts have a 2 year onsite warranty

Sinks & Basins



Cleaners Sink with Brackets

AB-CS-B

CS-H/CSG (cleaners sink only)

CSB (wall brackets only)

- 31.2L Capacity
- Constructed from 1mm 304 grade stainless steel
- Mirror polish finish
- 50mm splashback
- 90mm outlet - Suits basket waste or 90mm Scraptrap
- Comes complete with hinged grate
- Available with stainless steel wall brackets



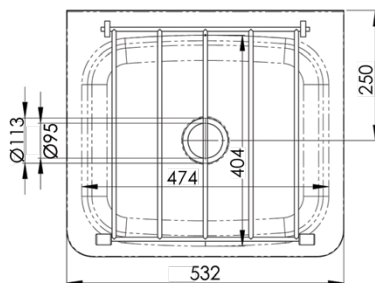
Use optional
SAFETEE-STRIP
for no sharp edges



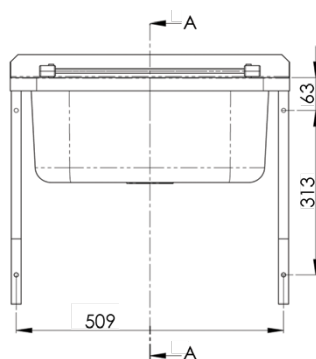
Optional Overflow
Kit available



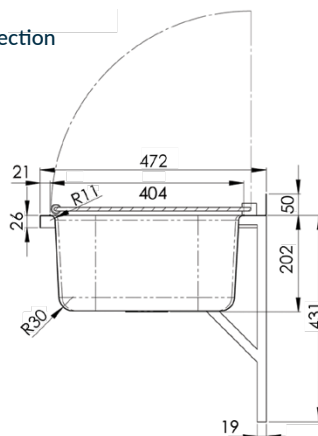
Top



Front



Cross Section



3monkeez.com.au

Sinks & Basins



Cleaners Sink with Legs

AB-CS-L

CS-H/CSG (cleaners sink only)

CSL (legs & adjustable feet only)

- 31.2L Capacity
- Constructed from 1mm 304 grade stainless steel
- Mirror polish finish
- 50mm splashback
- 90mm outlet - Suits basket waste or 90mm Scraptrap
- Comes complete with hinged grate
- Available with stainless steel legs with adjustable feet



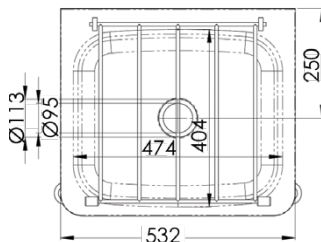
Use optional
SAFETEE-STRIP
for no sharp edges



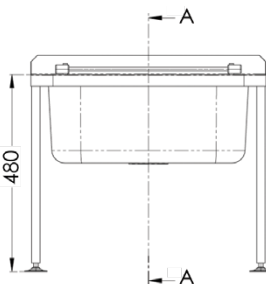
Optional Overflow
Kit available



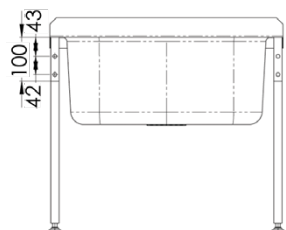
Top



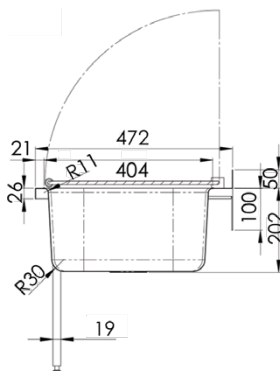
Front



Back



Cross Section



3monkee.com.au

Sinks & Basins



Flat Splashbacks

CLEANERS SINKS

CS-H/CSG-SB-300

- Separate Stainless Steel Splashback - 530mmW x 300mmH. Suits Cleaners Sink. 1.2mm 304 Grade Stainless Steel
- Custom sizes or 316 grade available on request



CS-H/CSG-SB-450

- Separate Stainless Steel Splashback - 530mmW x 450mmH. Suits Cleaners Sink. 1.2mm 304 Grade Stainless Steel
- Custom sizes or 316 grade available on request



HAND BASIN

HB-SB

- Separate Stainless Steel Splashback - 500mmW x 300mmH. Suits HB and Rectangular Knee Operated Basin. 1.2mm 304 Grade Stainless Steel
- Custom sizes or 316 grade available on request



Sinks & Basins



Conical Flushing Rim Sink - 350mm

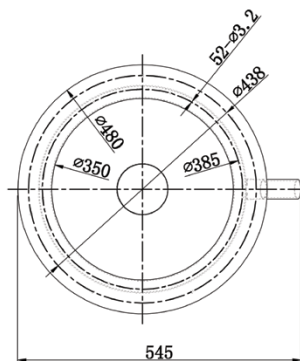
FRSC-DI350-304

FRSC-DI350-316

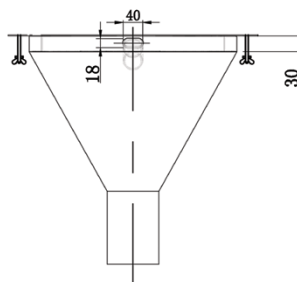
- Available in 1.2mm 304 grade or 316 grade stainless steel
- Integral flange around top of bowl
- 25mm BSP female inlet
- Concealed 25mm diameter flushing rim
- 100mm dropper waste



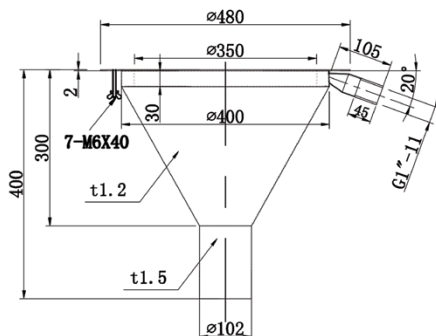
Top



Front



Side



Sinks & Basins



Conical Flushing Rim Sink - 450mm

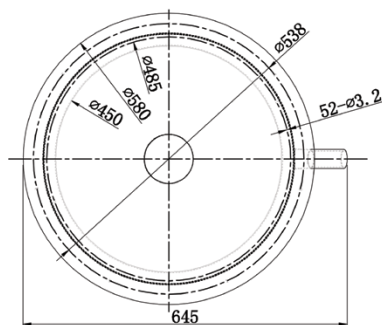
FRSC-DI450-304

FRSC-DI450-316

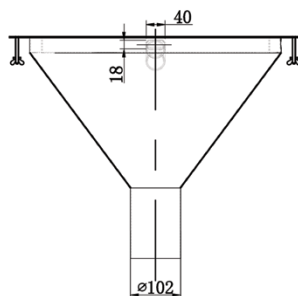
- Available in 1.2mm 304 grade or 316 grade stainless steel
- Integral flange around top of bowl
- 25mm BSP female inlet
- Concealed 25mm diameter flushing rim
- 100mm dropper waste



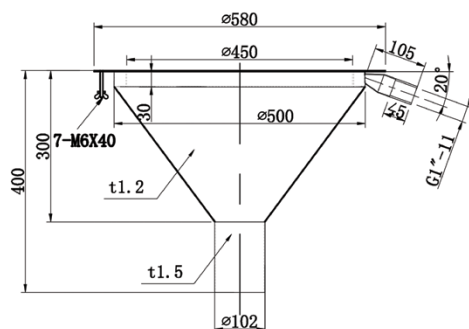
Top



Front



Side



Sinks & Basins



Square to Conical Flushing Rim Sink - 350mm

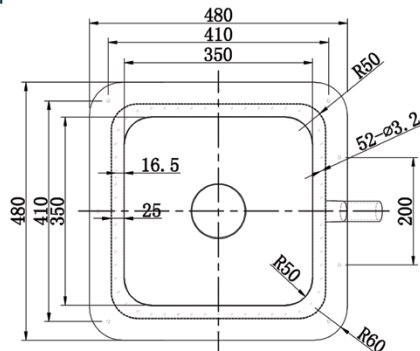


FRSS-DI350-304

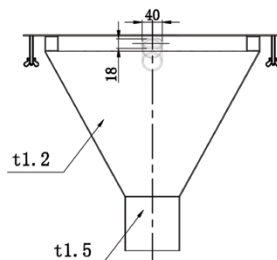
FRSS-DI350-316

- Available in 1.2mm 304 grade or 316 grade stainless steel
- Integral flange around top of bowl
- 25mm BSP female inlet
- Concealed 25mm diameter flushing rim
- 100mm dropper waste

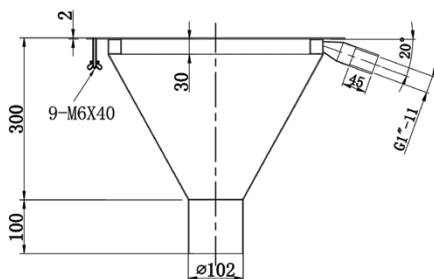
Top



Front



Side



Sinks & Basins



Square to Conical Flushing Rim Sink - 450mm

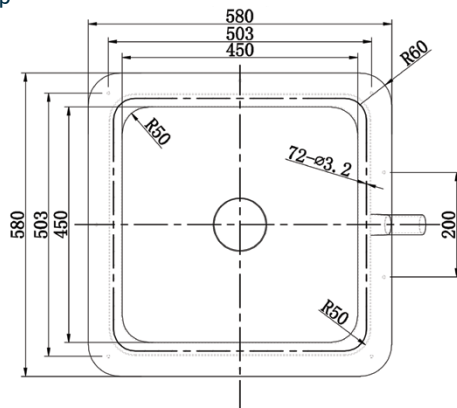


FRSS-DI450-304

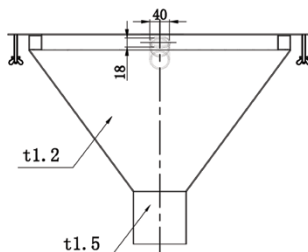
FRSS-DI450-316

- Available in 1.2mm 304 grade or 316 grade stainless steel
- Integral flange around top of bowl
- 25mm BSP female inlet
- Concealed 25mm diameter flushing rim
- 100mm dropper waste

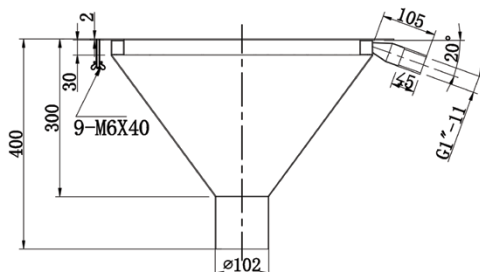
Top



Front



Side





NSW 02 9627 6111
VIC 03 9357 6562
QLD 07 3881 0322

WA 08 6305 0681
SA 0417 731 718
ACT 0408 446 961

TAS 03 6344 7060
NT 0447 382 658
FNQ 07 4775 6956

3monkeez

www.3monkeez.com.au
sales@3monkeez.com.au