

Congratulations! You have just purchased one of the premium products from 3monkeez commercial tapware range which has been manufactured to Australian Standard AS/NZS3718.

SCOPE OF APPLICATION

T-3MSS-BTAPB

Features:

- Full stainless steel construction (means lead free water)
- Available with push button or lever handle

T-3MSS-BTAL

- WELS 6 Star - 3LPM
- Adjustable timed flow cartridge allows from 0sec - 18sec

IMPORTANT INFORMATION

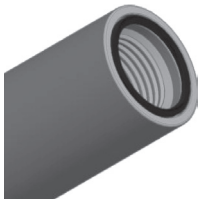


Note: Please follow the below procedures. If the below procedures are not followed it may impact the life of some components and void warranties.

- Spout must be installed by a qualified plumber in accordance with the Plumbing Code of Australia (PCA), AS/NZS3500 and the Manufacturer's instructions
- All pipework must be thoroughly flushed to remove any debris prior to installation as foreign materials may cause damage to internal parts and affect performance
- If the unit is replacing an existing unit please ensure the water supply is turned off. It is recommended that isolating stop taps are fitted to the inlet connections (in applications where this is possible)

INSTALLATION INSTRUCTIONS

Figure 1



Step 1

Flush the water supply line to clear any debris. Remove the unit from the packaging.

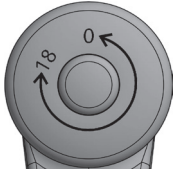
Step 2

If using the extension piece, fit this to the bib tap body using appropriate thread sealant, ensuring the o ring is in place (shown in figure 1).

Step 3

Fit the bib tap to the 1/2" MI BSP wall outlet using appropriate thread sealant (if using the extension piece) or the 1/2" FI BSP wall outlet using appropriate thread sealant (if not using the extension piece)

Figure 2



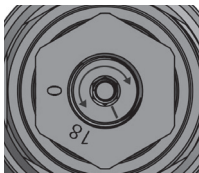
Step 4

Once the unit has been installed, turn on the water supply to the bib tap and test the functionality of the bib tap. Check for any leaks. Place the appropriate coloured indicator in place.

Step 5

To adjust the timed flow on the push button bib tap; carefully remove the indicator from the top assembly. The cartridge has 315 degrees of adjustment, markings are shown on the decal on the push button head (figure 2). Adjust the position of the line marking on the cartridge top using a 3mm allen key. Test timed flow. Adjust and test again until the desired timed flow is achieved. Place the appropriate coloured indicator back in place and remove the decal.

Figure 3

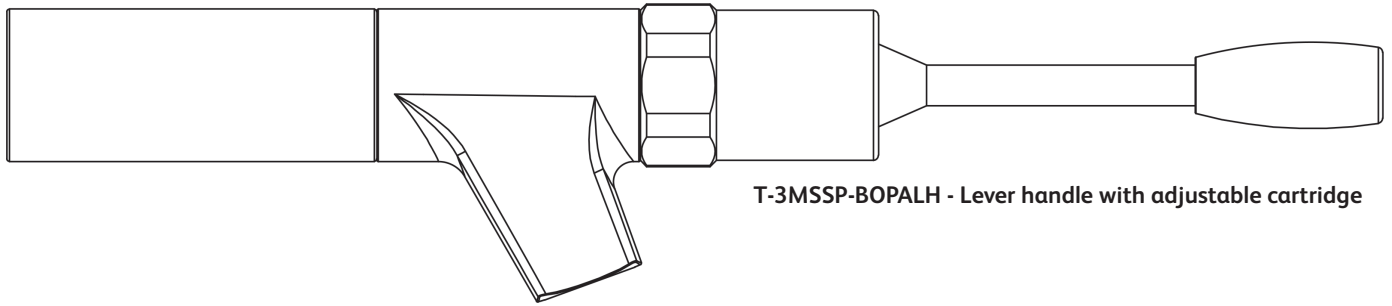


To adjust the timed flow on the lever handle bib tap; carefully remove the lever handle top using a shifter or spanner, ensuring the spring and spring plate remain inside handle top. The cartridge has 315 degrees of adjustment, markings are shown on the cartridge top (figure 3). Adjust the position of the line marking on the cartridge top using a 3mm allen key. Test timed flow. Adjust and test again until the desired timed flow is achieved. Screw the lever handle top back onto the bib tap tightly, ensuring the spring and spring plate remain inside. Replace the indicator with the appropriate colour if required.

TIME MAY VARY ACCORDING TO WATER PRESSURE, FLOW RATE AND TEMPERATURE

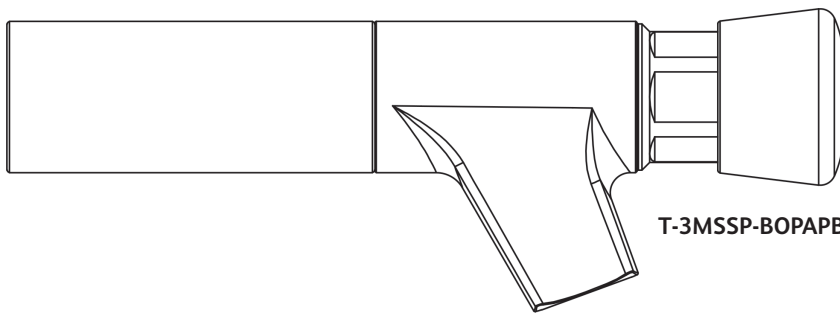
TECHNICAL INFORMATION

Bib Tap Inlet Connection	1/2" MI BSP Thread (Without Extension Piece) / 1/2" FI BSP Thread (With Extension Piece)
Bib Tap Outlet	Neoperl Diffuser
Working Pressure Range	30kPa - 500kPa
Flow Rate	3LPM
Recommended Operating Temperature	5-50 Degrees Celcius
Finish	Satin Stainless Steel



T-3MSSP-BOPALH - Lever handle with adjustable cartridge

T-3MSSP-BOBT - Bib tap body only



T-3MSSP-BOPAPB - Push button with adjustable cartridge

STAINLESS STEEL MAINTENANCE AND CLEANING INSTRUCTIONS

Stainless steel products must be cleaned on a regular basis to maintain the ability to resist corrosion. The surface of stainless steel has a protective layer that creates a protective shield against oxidation; which makes it durable and long lasting. Protecting this layer is important to ensure the longevity of this product.

Cleaning stainless steel products is an easy task when done regularly:

- Clear away all food and water deposits from the surface with a microfiber cloth or soft sponge; don't use abrasive materials as they have a negative impact on the protective layer
- Once cleared of debris, go over the surface with a food safe stainless steel cleaner, bicarb soda or mild detergent and water. The best chemicals for stainless steel contain alkaline and don't have chloride in them
- To remove stubborn stains, use a good quality stainless steel cleaner and non abrasive cloth
- Rinse thoroughly with clean fresh water
- Towel dry the product with a soft dry absorbent cloth after cleaning and use. This will prevent mineral deposits building up on the surface of the product
- Once dry, use a food safe stainless steel or metal polish
- Follow the grain of the metal to ensure the best results and to avoid further damage to the surface
- Always keep the product clean and dry when not in use
- Don't leave anything citric on the product as it can etch the surface over time
- Don't leave soaps and other cleaners on your stainless steel product overnight
- Don't leave damp sponges or cloths on the inside or edge of the product when not in use

TIP - Cleaning your stainless steel equipment after each use as above will ensure the product remains in good condition.